

Clear Choice Community Series



Clayton[®]
wakarusa

**You asked, and we listened.
This series was thoughtfully designed
for communities, which makes it the
Clear Choice for your new home inventory!**

**Our top-selling
community models are
available in multiple sizes to
match your needs.**



Highlighted standards

- Samsung® stainless steel appliances
- DuraCraft® cabinets
- Dishwasher
- 8" Stainless steel sink
- Led can lights throughout
- W/b for ceiling fan in lr and primary
- Lino throughout
- 36x80 6-panel front door
- One-piece fiberglass units in both baths
- Porcelain lavatories
- Metal faucets
- Towel & tissue holders – both baths
- 2" mini blinds throughout

Wakarusa Clear Choice Midwest Package*

- Osb wrap
- 2x6" exterior walls
- 36x80 in-swing rear door
- Zone III energy star insulation
- Pier savers
- Skirting ready
- Architectural shingles
- Lined overhead cabinets
- Finished closets
- Whole home water shut off
- 4" backsplash throughout

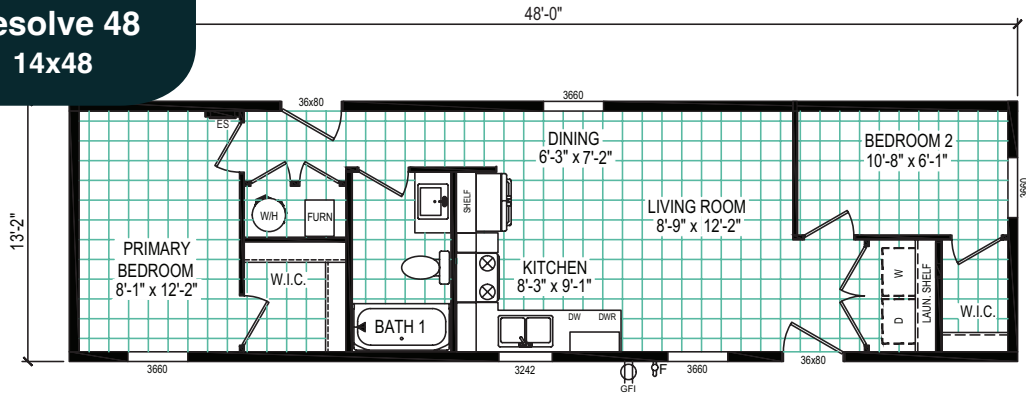
Additional upgrades

- Multiple exterior elevations
- Scissor storm doors
- Flexible exterior door locations
- Kitchen island/peninsula
- Space saver microwave above range
- Additional windows (where available)
- Double bowl vanities (where available)
- Additional shutters (per pair)
- And more!

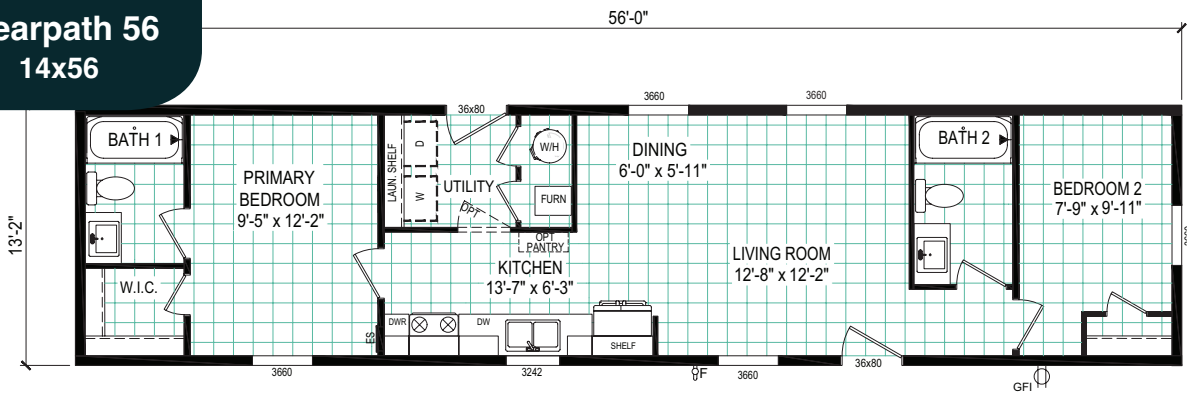
* Clear Choice Midwest Package required with all Clayton Wakarusa Clear Choice homes.

Single-section homes (14' wide)

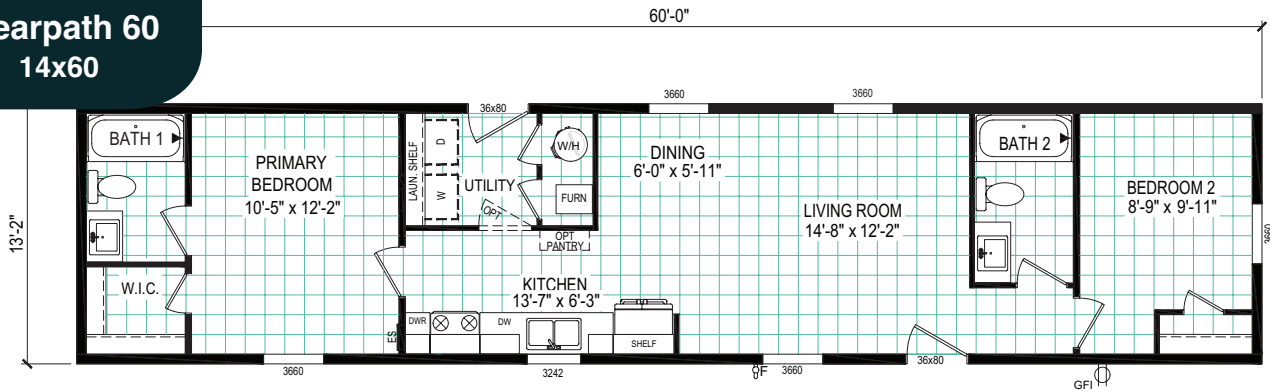
Resolve 48
14x48



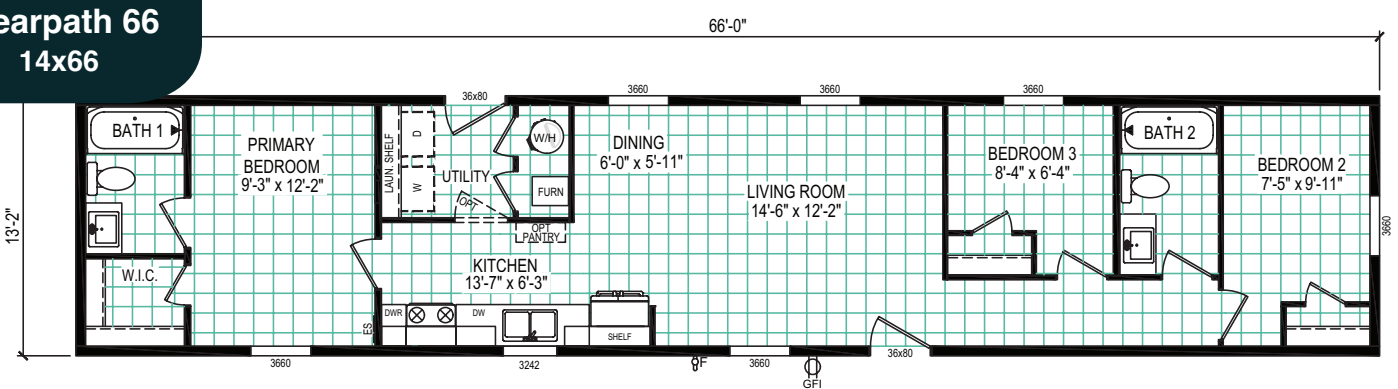
Clearpath 56
14x56



Clearpath 60
14x60



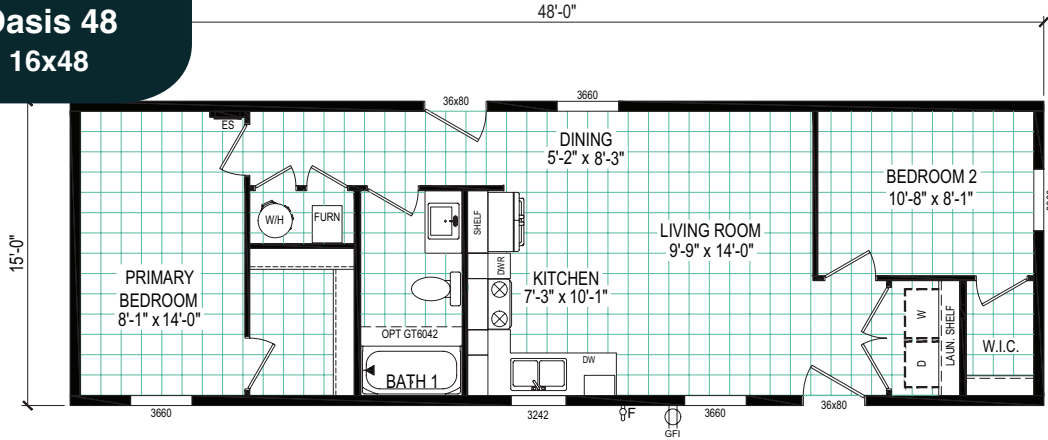
Clearpath 66
14x66



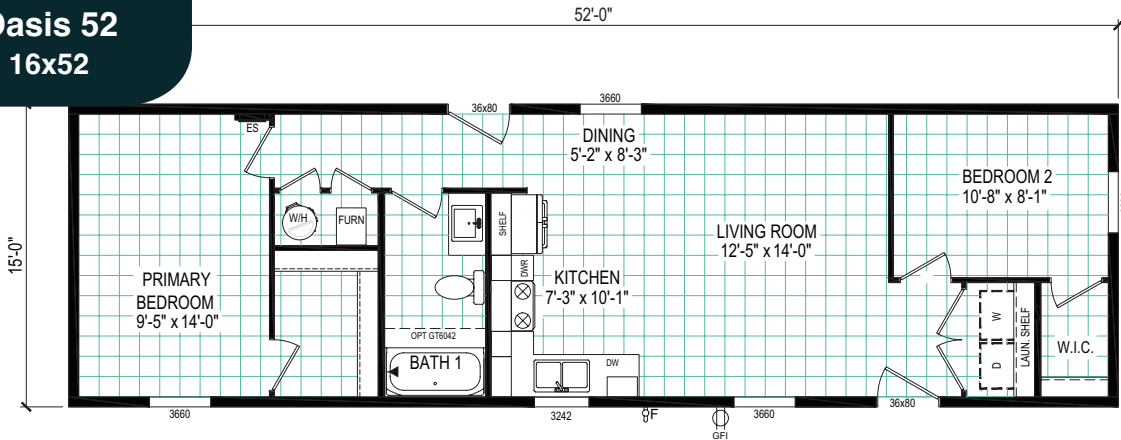
Single-section homes (16' wide)



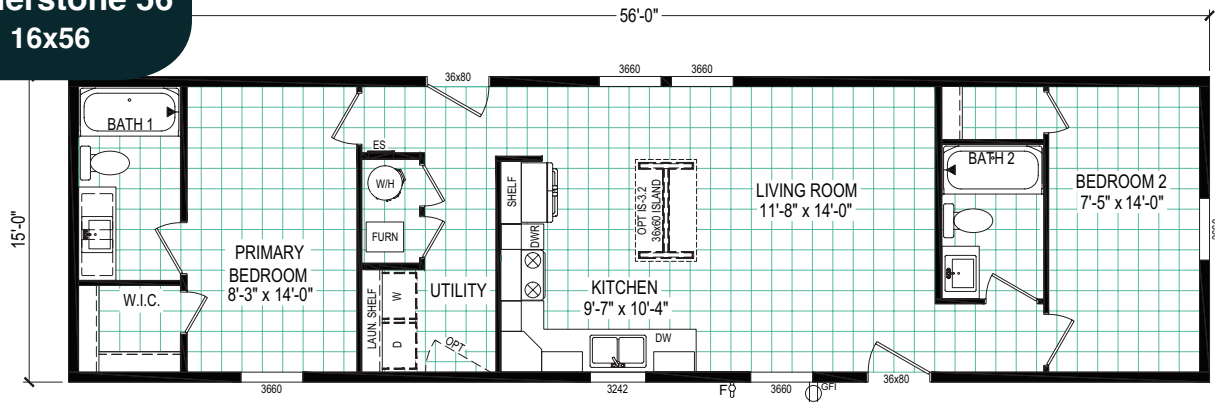
Oasis 48
16x48



Oasis 52
16x52



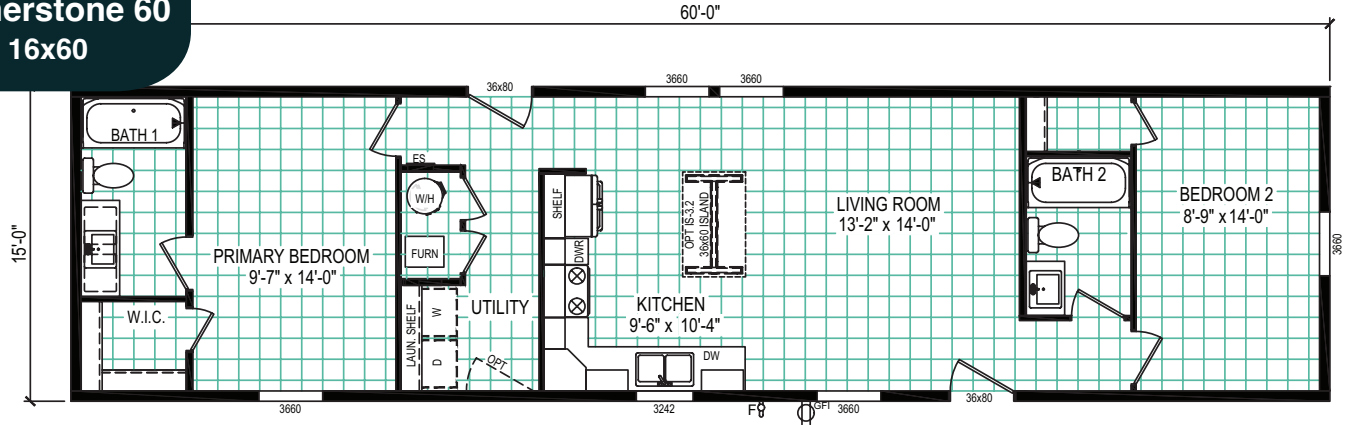
Cornerstone 56
16x56



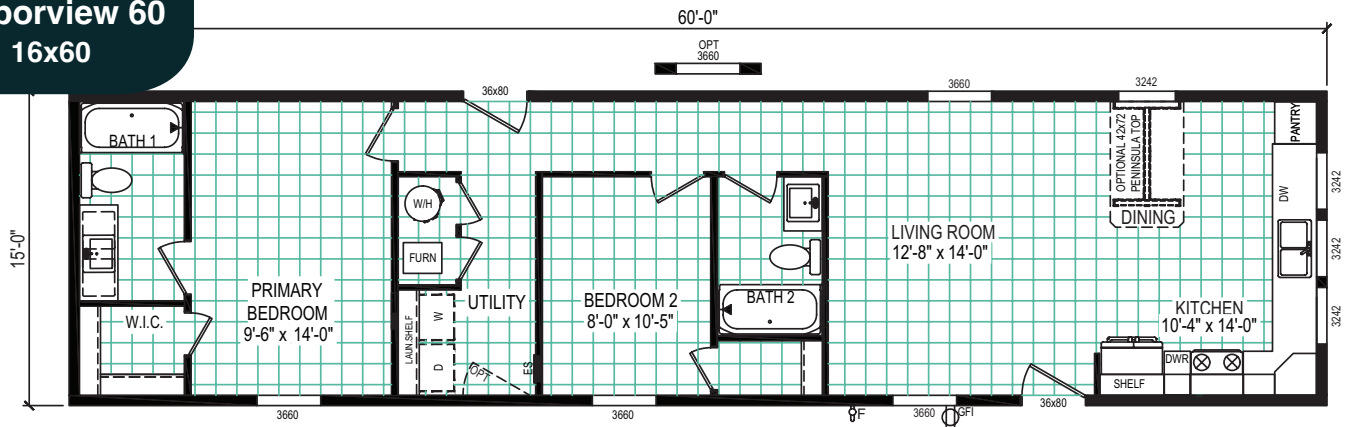


Single-section homes (16' wide)

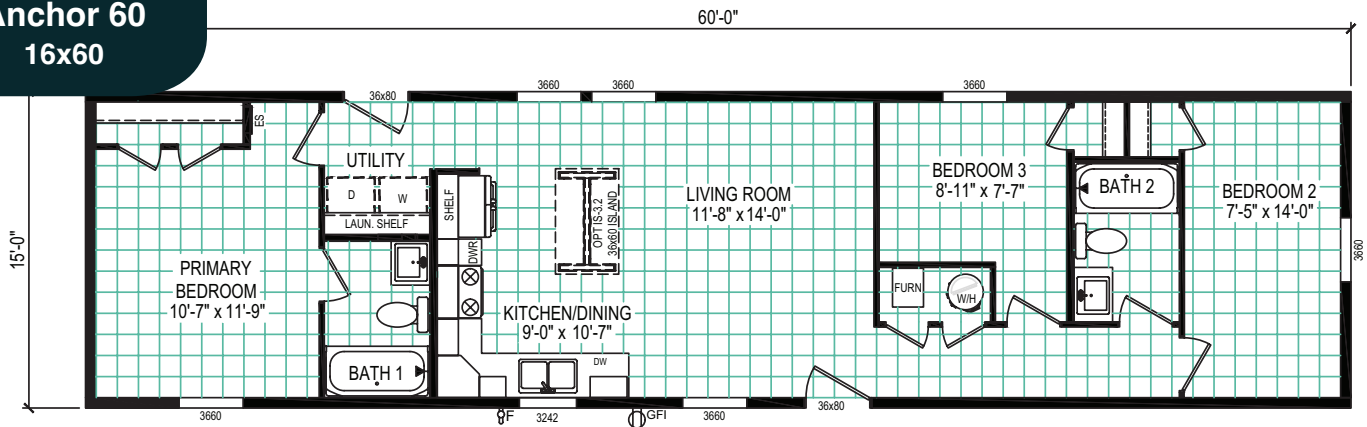
Cornerstone 60
16x60



Harborview 60
16x60



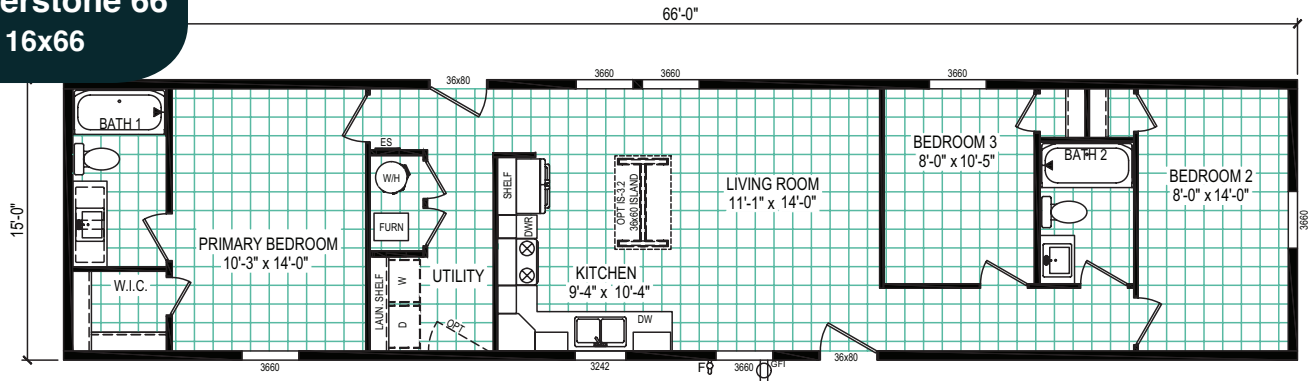
Anchor 60
16x60



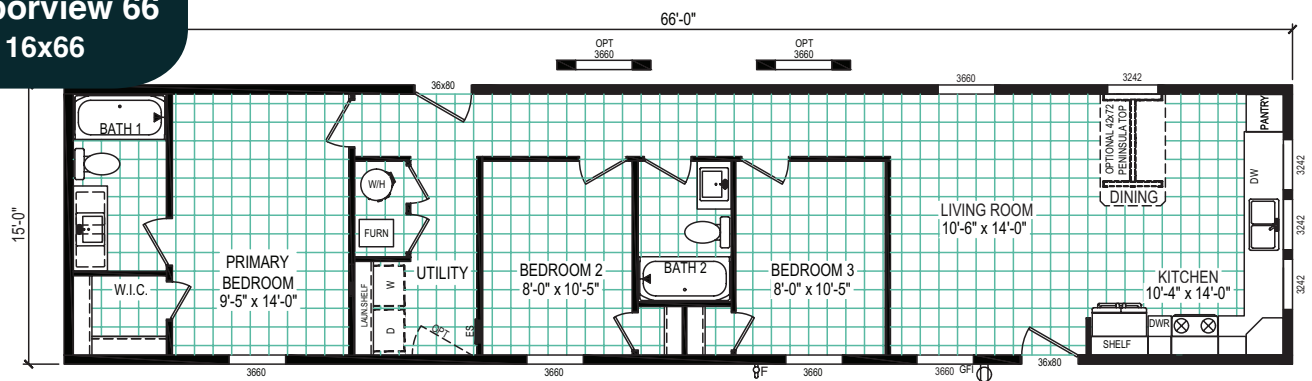
Single-section homes (16' wide)



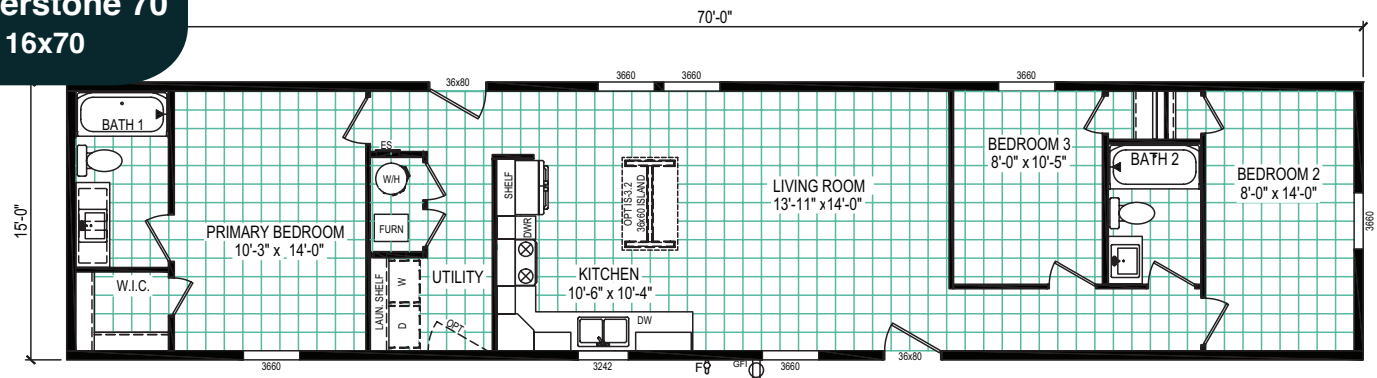
Cornerstone 66
16x66



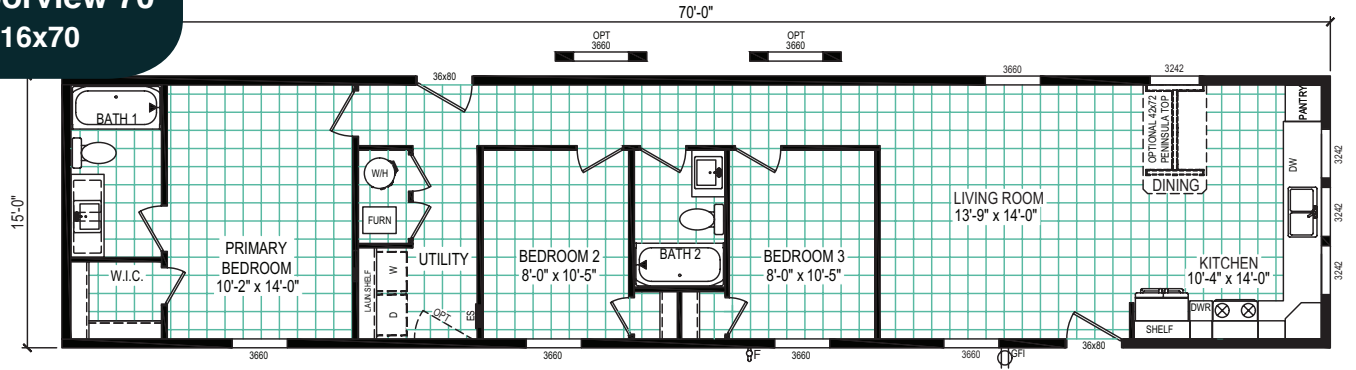
Harborview 66
16x66



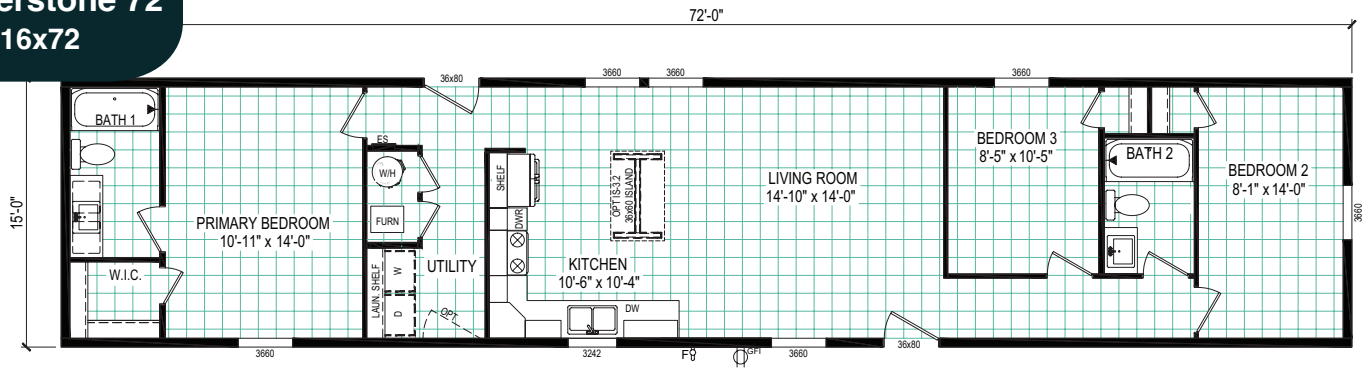
Cornerstone 70
16x70



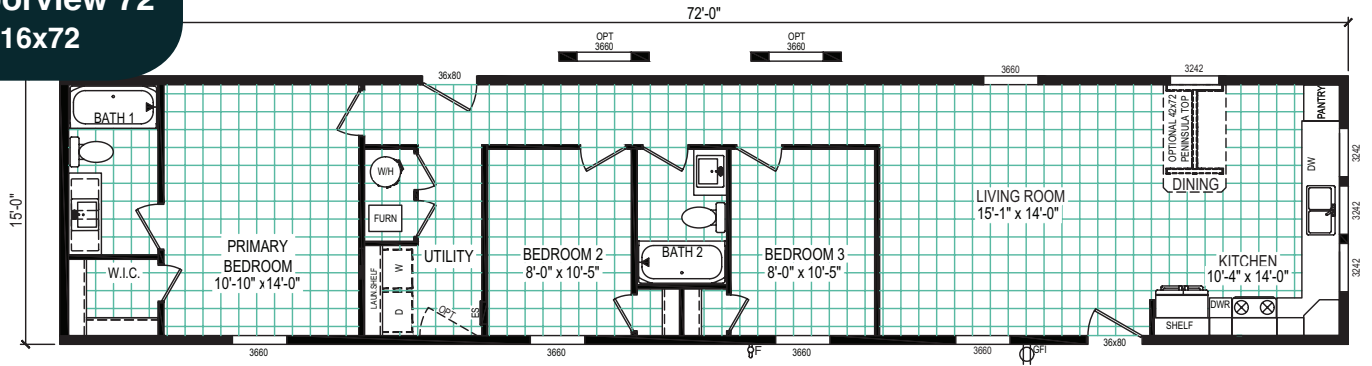
Harborview 70
16x70



Cornerstone 72
16x72



Harborview 72
16x72



Single-section hitch end elevation options



Standard



Standard w/ optional shed dormer



Elevation package #1



Elevation #1 w/ opt. shed dormer



Elevation package #2



Elevation #2 w/ opt. shed dormer



Elevation package #3

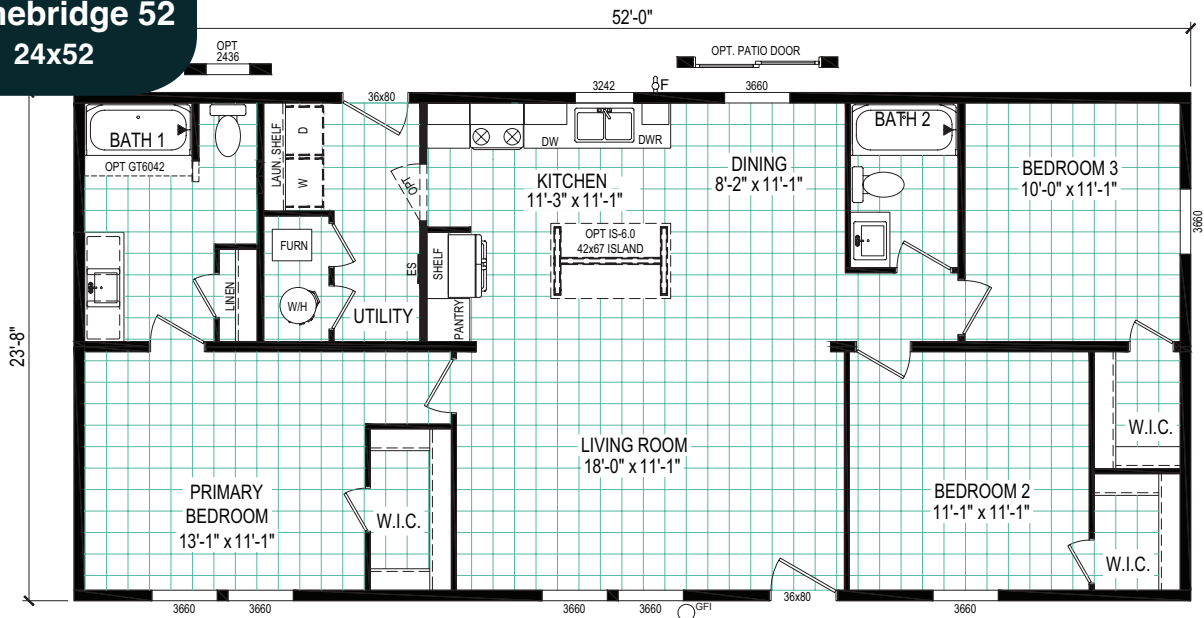


Elevation #3 w/ opt. shed dormer

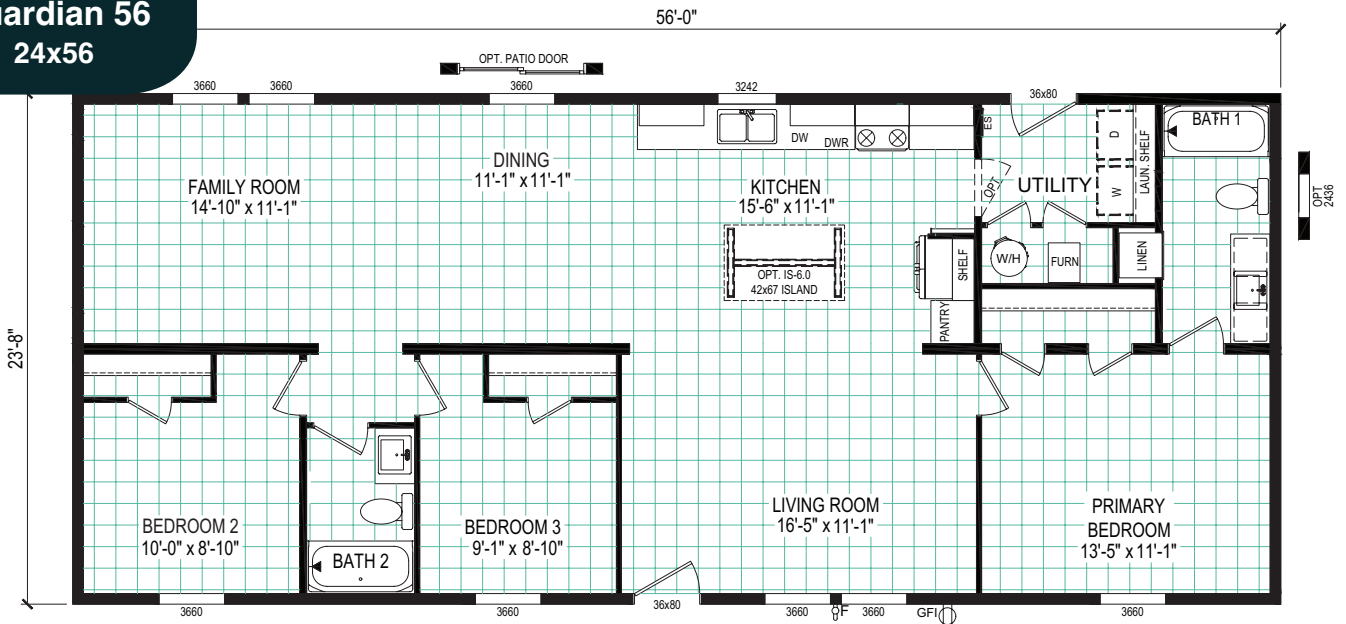


Multi-section homes (24' wide)

Stonebridge 52 24x52



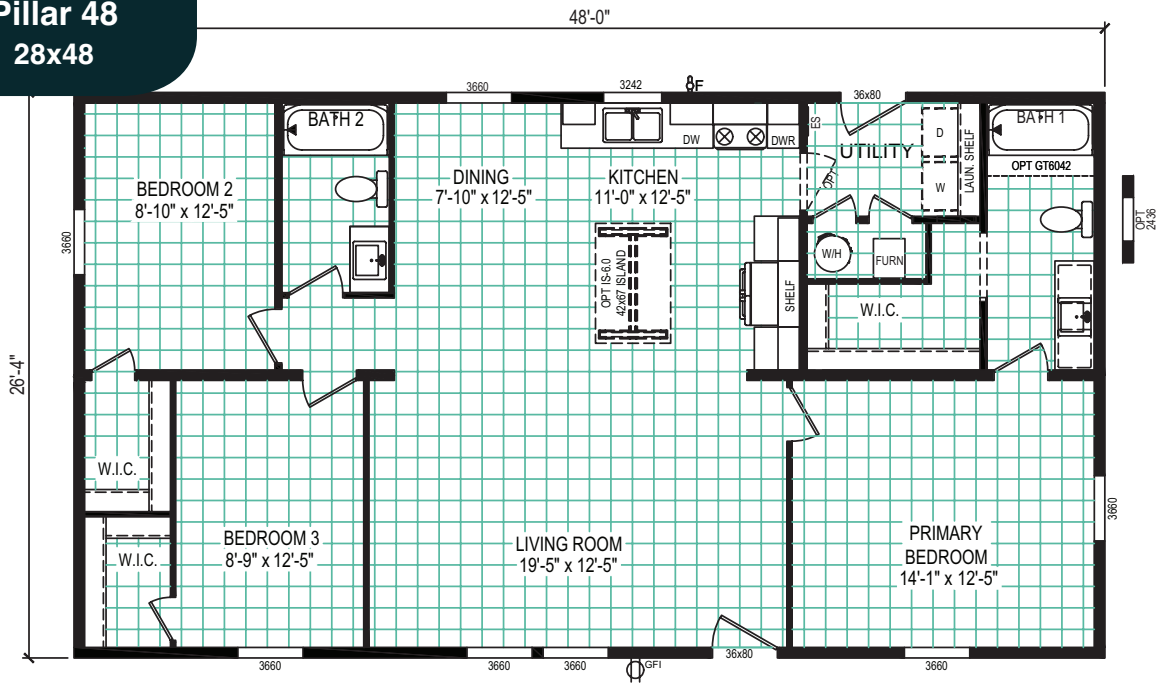
Guardian 56 24x56



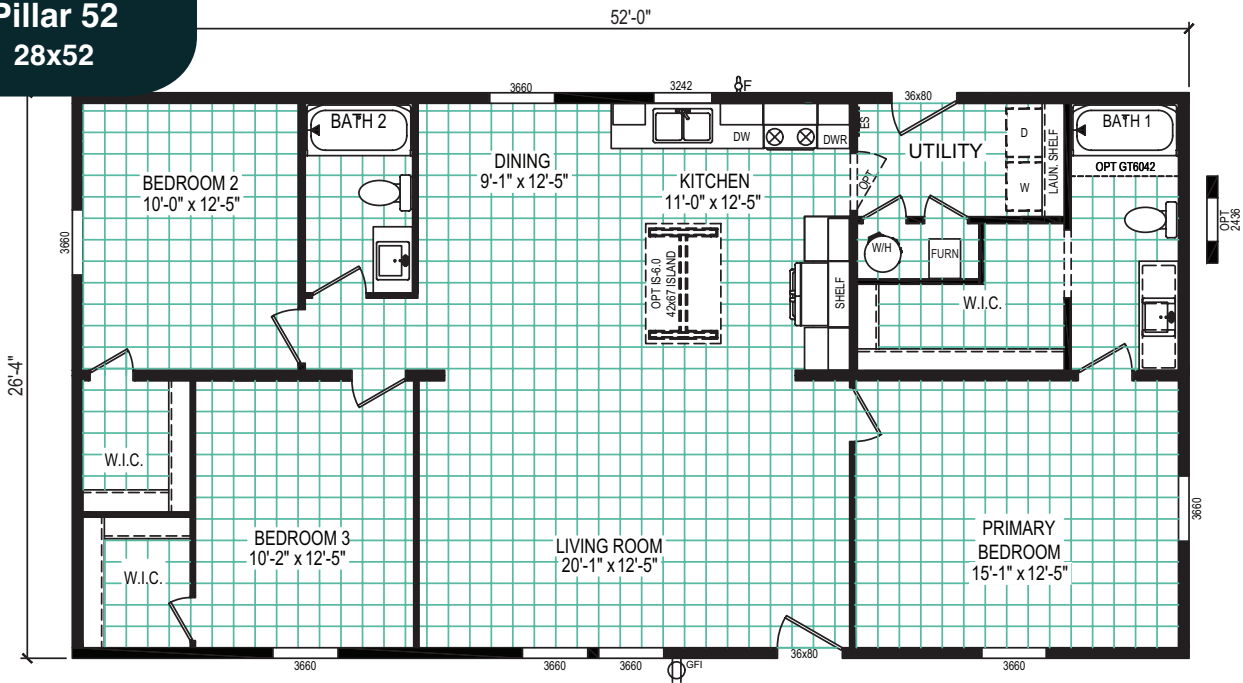
Multi-section home (28' wide)



Pillar 48 28x48



Pillar 52 28x52





**Clayton
Built**

Clayton Built® is more than a tagline. It represents our resounding commitment to quality.

Our homes are backed by the skilled craftsmanship of more than 12,000 team members dedicated to opening doors to a better life through attainable homeownership.

574-862-4461

ConnectSalesWakarusa@clayton.net

*The home series, floor plans, options, photos, renderings, specifications, features, pricing, materials and availability shown will vary by retailer and state, and are subject to change without notice.

Clayton
wakarusa