

Opening Doors

to a better life.



Clayton
wakarusa
2026

PULSE
COLLECTION



Visit Us Online

Table of contents

Standard features

3 Standard features

Single section models

4 4016-4770 | 1 bed | 1 bath | 600 sq. ft. | 16x40
 5 4816-4790 | 2 beds | 1 bath | 720 sq. ft. | 16x48
 6 5216-4790 | 2 beds | 1 bath | 780 sq. ft. | 16x52
 7 5616-4779 | 2 beds | 2 baths | 840 sq. ft. | 16x56
 8 6016-4711 | 2 beds | 2 baths | 900 sq. ft. | 16x60
 9 6016-4779 | 2 beds | 2 baths | 900 sq. ft. | 16x60
 10 6616-4711 | 3 beds | 2 baths | 990 sq. ft. | 16x60
 11 6616-4772p | 2 beds | 2 baths | 910 sq. ft. | 16x66
 12 6616-4779 | 3 beds | 2 baths | 990 sq. ft. | 16x66
 13 6616-4791 | 3 beds | 2 baths | 990 sq. ft. | 16x66
 14 7616-4700 | 3 beds | 2 baths | 1,140 sq. ft. | 16x76
 15 7616-4710 | 3 beds | 2 baths | 1,140 sq. ft. | 16x76
 16 7616-4714 | 3 beds | 2 baths | 1,140 sq. ft. | 16x76
 17 7616-4773P | 3 beds | 2 baths | 1,060 sq. ft. | 16x76
 18 7616-4779 | 3 beds | 2 baths | 1,140 sq. ft. | 16x76

Multi-section models

19 5624-5734P | 3 beds | 2 baths | 1,168 sq. ft. | 24x56
 20 4028-5751 | 3 beds | 2 baths | 1,053 sq. ft. | 28x40
 21 4428-5781 | 3 beds | 2 baths | 1,159 sq. ft. | 28x44
 22 4828-5746 | 3 beds | 2 baths | 1,264 sq. ft. | 28x48
 23 4828-5783 | 3 beds | 2 baths | 1,264 sq. ft. | 28x48
 24 5228-5774P | 3 beds | 2 baths | 1,299 sq. ft. | 28x52
 25 5228-5785 | 3 beds | 2 baths | 1,456 sq. ft. | 28x52
 26 5628-5774P | 3 beds | 2 baths | 1,404 sq. ft. | 28x56
 27 5628-5786 | 3 beds | 2 baths | 1,475 sq. ft. | 28x56
 28 5628-5787 | 3 beds | 2 baths | 1,475 sq. ft. | 28x56
 29 5628-5745p | 3 beds | 2 baths | 1,299 sq. ft. | 28x56
 30 6028-5788 | 4 beds | 2 baths | 1,580 sq. ft. | 28x60
 31 6428-5792 | 3 beds | 2.5 baths | 1,685 sq. ft. | 28x64
 32 7228-5789 | 3 beds | 2 baths | 1,896 sq. ft. | 28x72
 33 6032-5700 | 3 beds | 2 baths | 1,800 sq. ft. | 32x60

Optional features

34 Optional hitch end elevations – single sections
 35 Optional hitch end elevations – sectionals
 36 Optional dormers
 37 Optional door side americana elevations – sectionals
 38 Optional door side frontier elevations – sectionals

Standard features

ENERGY STAR® ready

Interior

- Decorative rods w/side panels – main living areas
- 2" Blinds throughout
- Shaw® 25 oz. "Cape Cod" carpet w/ 5# rebond pad
- Lux congoleum no wax vinyl flooring
- 8' Flat ceilings throughout
- Stipple ceiling finish
- Wall coverings 3/8" wall board
- Ventilated wire shelving in closets
- LED recessed can lights throughout
- LED bulbs - bath vanity lights
- (2) Pendant lights over islands (where available)
- ENERGY STAR® ceiling fan with w/LED light – living room
- 2" DuraCraft® flat ceiling cove, door & window casing throughout
- 30" 2-Panel white interior doors with 3 mortised hinges – bedrooms & baths
- High pressure laminated countertops – throughout
- 4" Laminate backsplash throughout
- Foyer linoleum
- Door chime
- Pfister® water saving metal faucets – kit/baths
- Kitchen island standard

Kitchen

- 42" Flat panel DuraCraft® o/h cabinets
- Center shelf base cabinets
- Refrigerator overhead cabinet
- MDF stiles
- GFCI receptacles
- Metal drawer guides
- Bank of drawers (4)
- Cabinet doorknobs & drawer pulls
- Concealed cabinet door hinges
- 8" Stainless steel double bowl kitchen sink
- 30" Free-standing electric range – stainless steel
- ENERGY STAR® 18 cf frost free refrigerator – stainless steel
- Window over kitchen sink (where available)

Baths

- 60" 1pc. fiberglass tub/shower – both baths
- Porcelain square sinks – both baths
- Elongated commodes – both baths
- Power vent bath fans
- GFCI receptacles
- Towel bar & tissue holders – both baths
- Stile framed mirrors – both baths
- 2-arm black vanity lights - both baths
- Double bowl lavs in bath 1 (where available)

Insulation

- Zone III insulation
 - R-38 blown ceiling insulation with vapor barrier
 - R-21 fiberglass insulation in walls
 - R-22 fiberglass insulation in floors

Exterior

- Nominal 3/12 roof pitch - 28'
- Nominal 4/12 roof pitch - 16'
- Nominal 5/12 roof pitch - 14'
- OSB exterior sheathing
- 25 year fiberglass architectural shingle
- Ice and water shield
- Aluminum fascia w/vented soffit
- 36"X80" 6-lite craftsman front door with storm & deadbolt – storm door shipped loose
- 36"X80" residential fiberglass rear door with storm & deadbolt – storm door shipped loose
- Exterior light at front & rear doors
- Double 4.5" Dutch lap vinyl siding
- Raised siding – skirting application
- (1) Exterior faucet – per print
- (1) Exterior recept – per print
- Conduit drop
- Lux™ argon gas low-e white vinyl sh windows – no grids
- 5" Window lineal – door side & H. E.
- Kwikset® smart key locks & hardware

Utilities

- Carrier® electric high efficiency SmartComfort® furnace with door
- Sealed duct system
- 200 Amp service panel box
- In-line / perimeter floor registers
- High/low return air system (where available)
- Rheem® 40 gal. dual element electric water heater w/door
- Water heater pan with exterior drain
- Pex plumbing
- Wire & plumb for washer
- Wire & vent for dryer installed
- Individual water shut offs throughout
- Whole house shut off
- Linked smoke detectors in main living areas & all bedrooms
- Programmable thermostat

Construction

- Steel I-beam frame with detachable hitch
- 2"X6" floor joists – 16" o.c.
- 2"X6" exterior walls – 16" o.c.
- 19/32" T&G OSB floor decking glued & fastened
- 20 Lb. Roof load
- Roof truss 24" O.C.
- 7/16" OSB roof sheathing
- Ridge vent roof venting
- Metal in-floor crossovers – sectionals
- Exterior door supports, front & rear doors
- All exterior penetrations sealed

PULSE COLLECTION

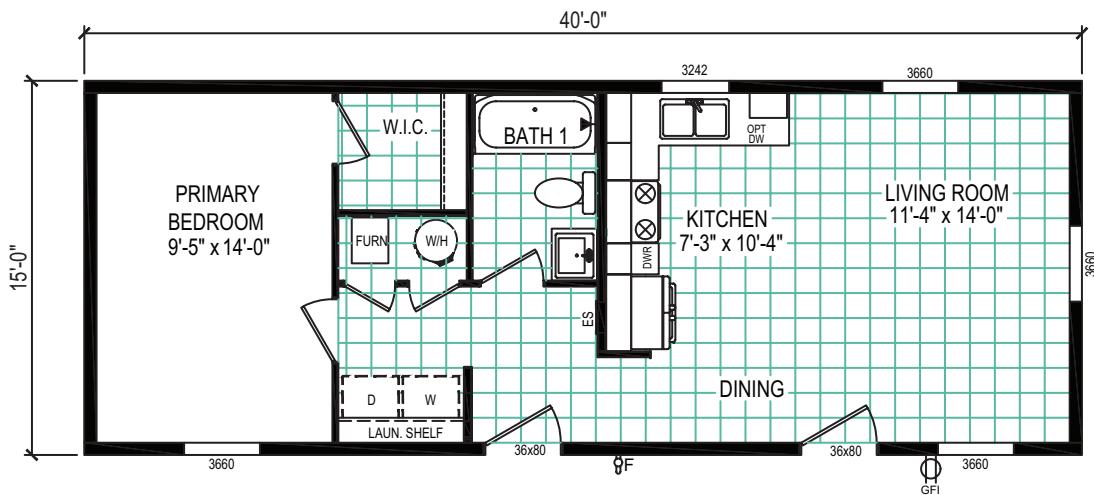
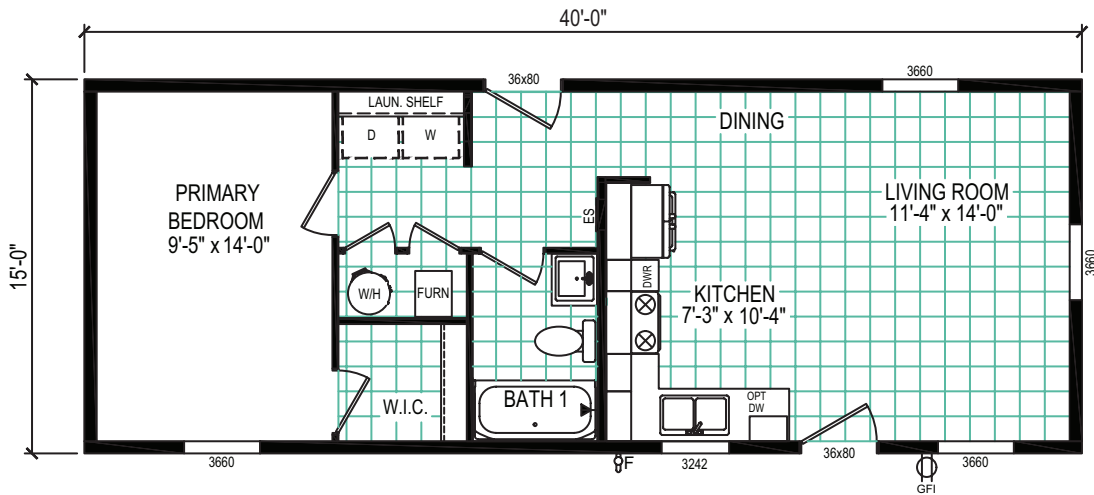


Single section

4016-4770

1 bed | 1 bath | 600 sq. ft. | 16x40

eBuilt



REVERSE AISLE OPTION

PULSE COLLECTION

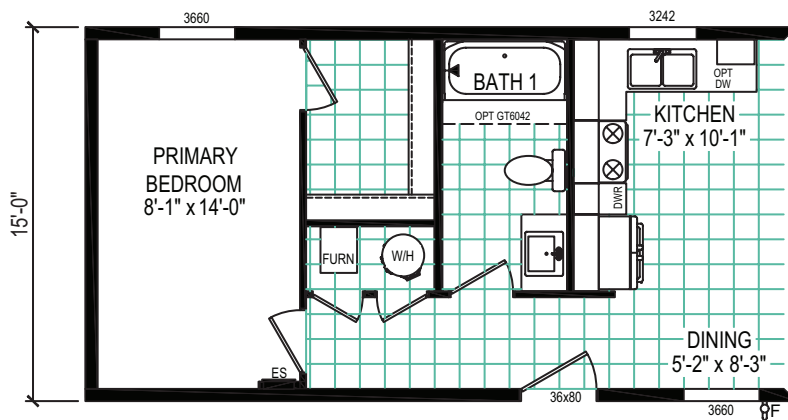
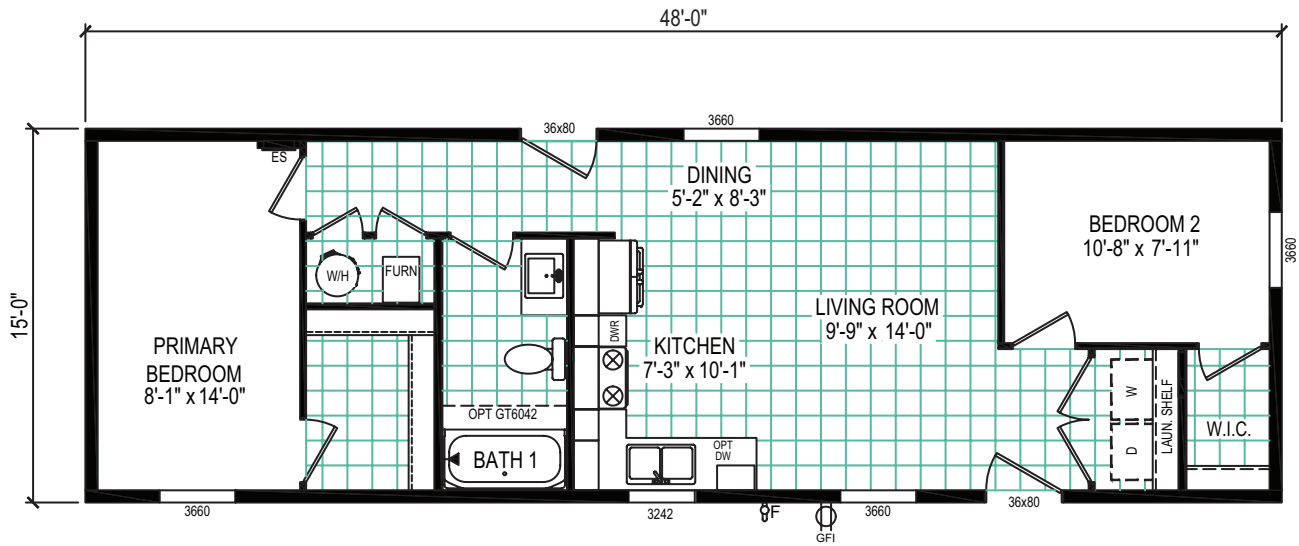


Single section

4816-4790

2 beds | 1 bath | 720 sq. ft. | 16x48

eBuilt



REVERSE AISLE OPTION

PULSE COLLECTION

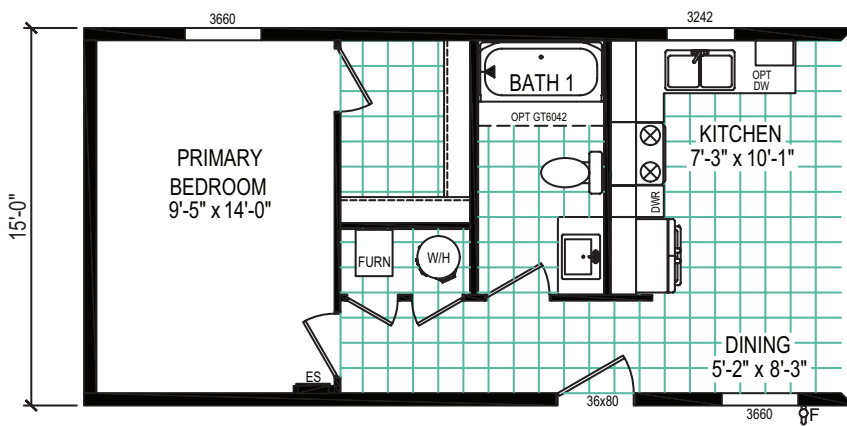
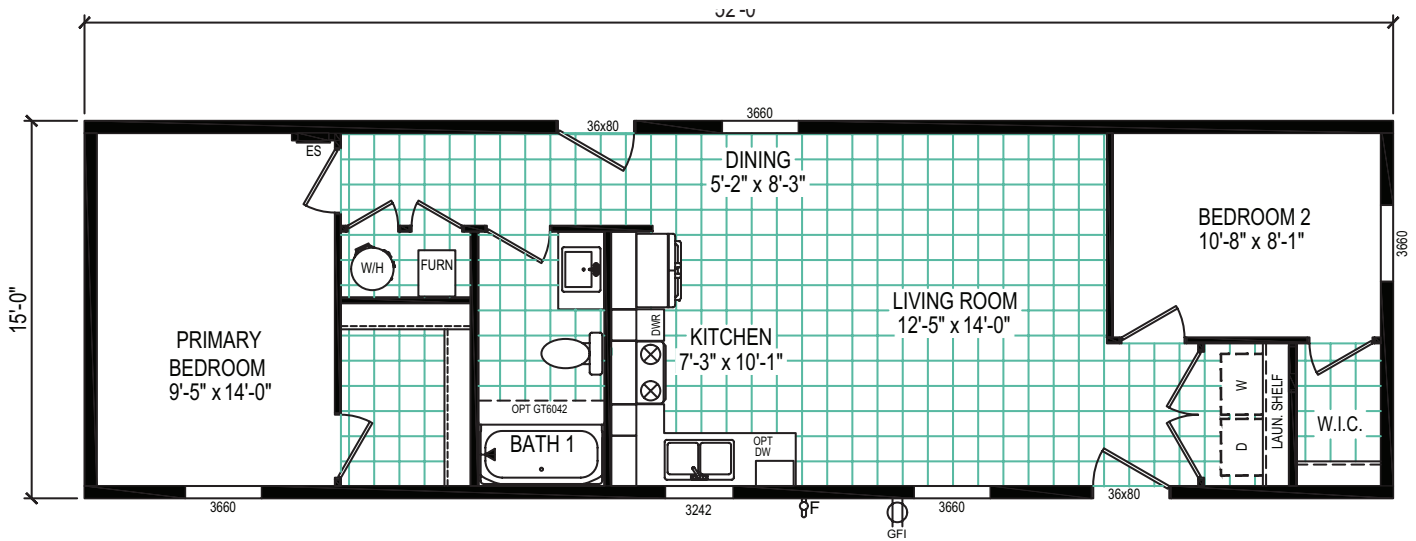


Single section

5216-4790

2 beds | 1 bath | 780 sq. ft. | 16x52

eBuilt



REVERSE AISLE OPTION

PULSE COLLECTION

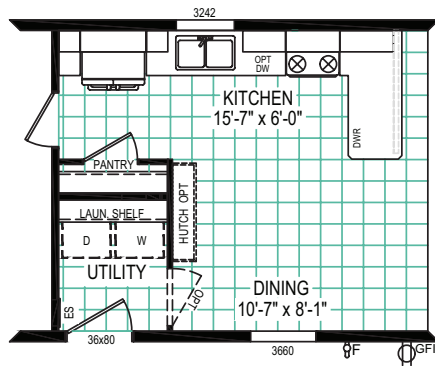
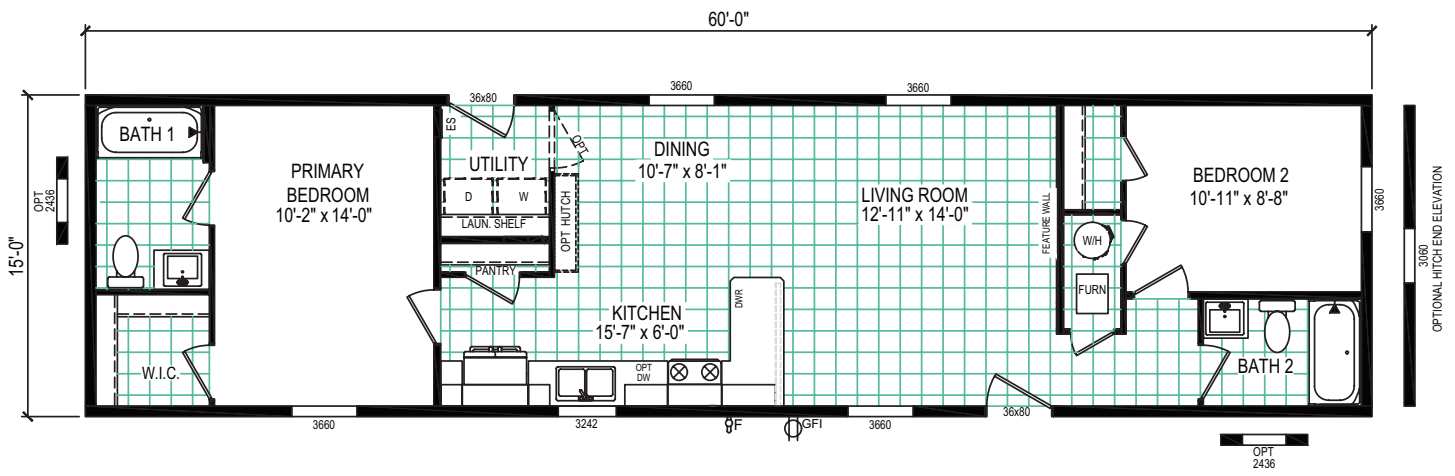


Single section

6016-4711

2 beds | 2 baths | 900 sq. ft. | 16x60

eBuilt



REVERSE AISLE OPTION

PULSE COLLECTION

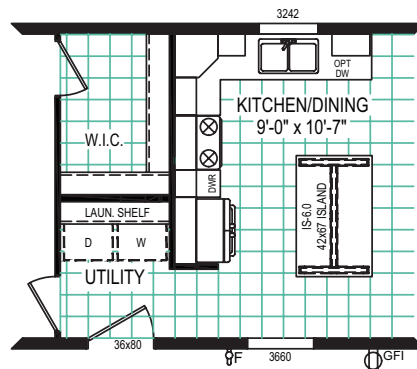
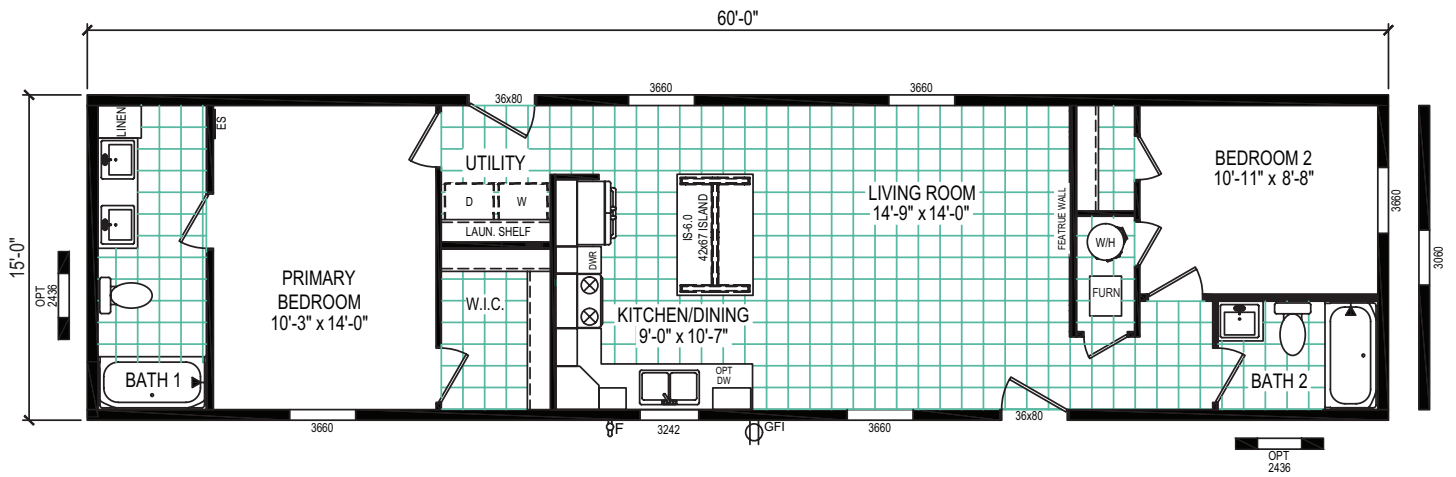


Single section

6016-4779

2 beds | 2 baths | 900 sq. ft. | 16x60

eBuilt



REVERSE AISLE OPTION

PULSE COLLECTION

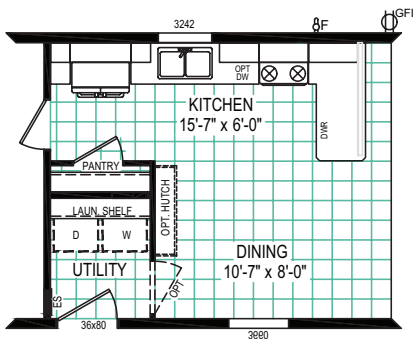
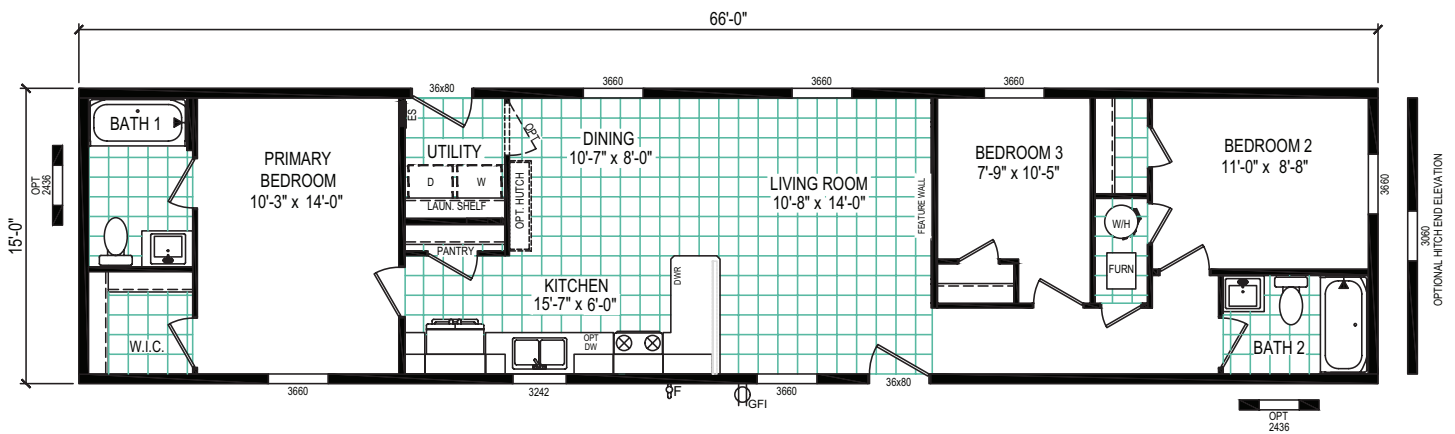


Single section

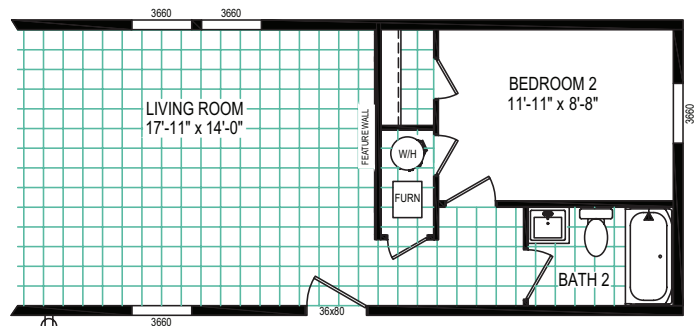
6616-4711

3 beds | 2 baths | 990 sq. ft. | 16x60

eBuilt



REVERSE AISLE OPTION



2-BEDROOM OPTION

PULSE COLLECTION

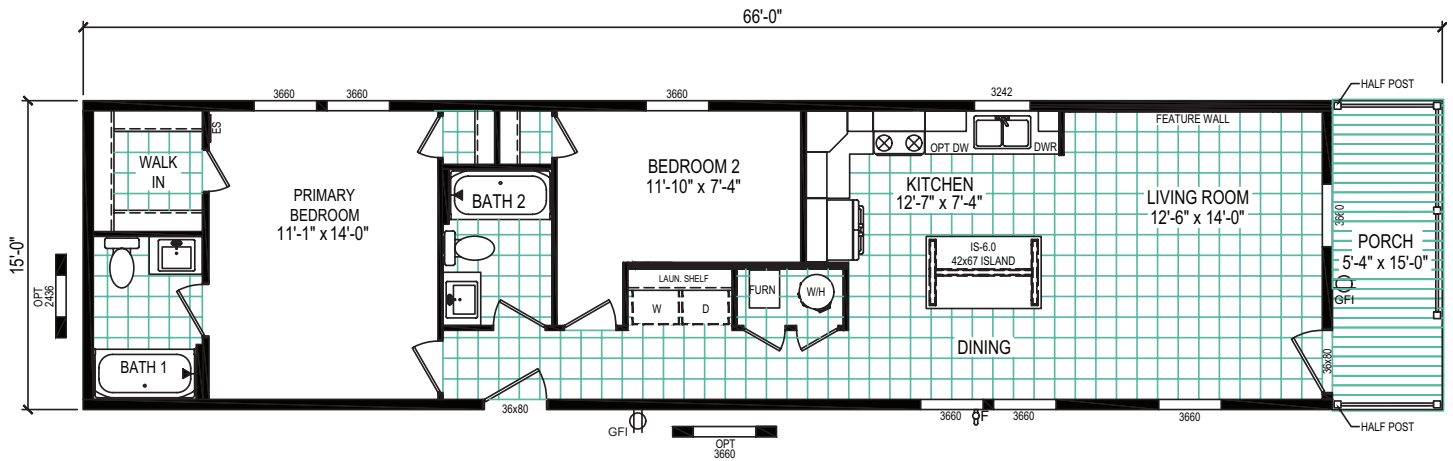


Single section

6616-4772P

2 beds | 2 baths | 910 sq. ft. | 16x66

eBuilt



PULSE COLLECTION

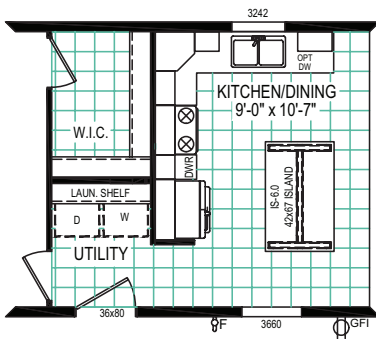
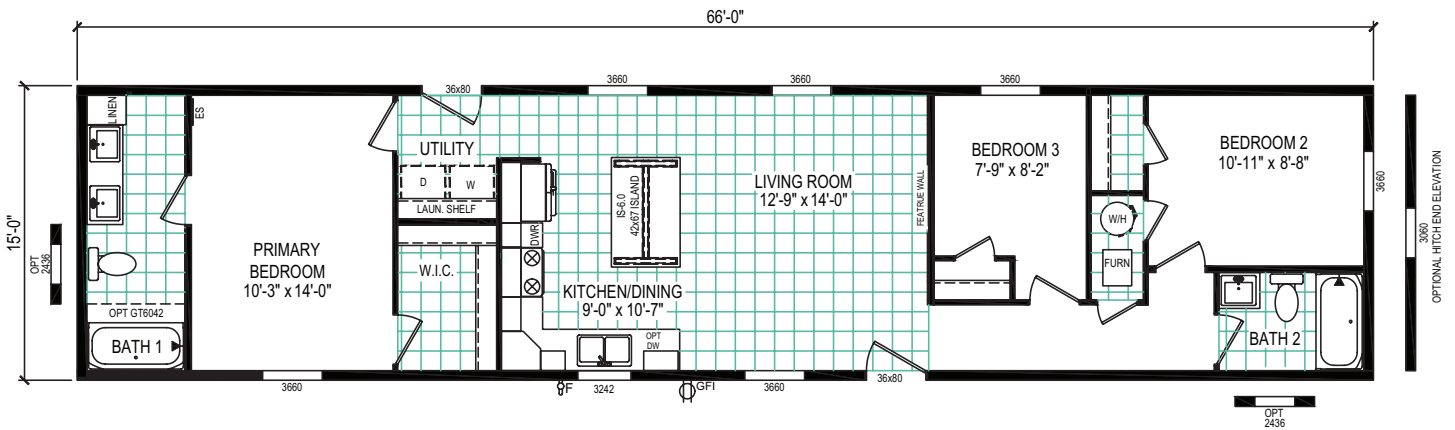


Single section

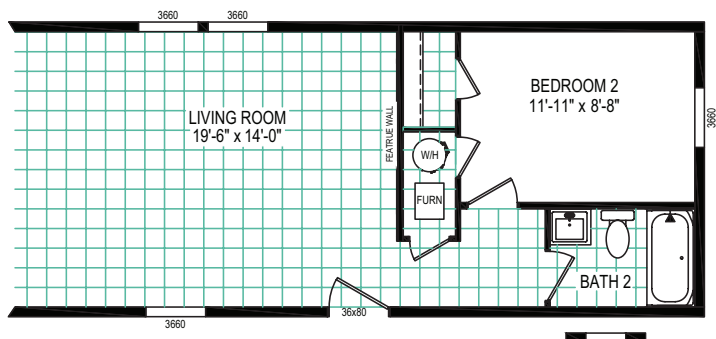
6616-4779

3 beds | 2 baths | 990 sq. ft. | 16x66

eBuilt.



REVERSE AISLE OPTION



2-BEDROOM OPTION

PULSE COLLECTION

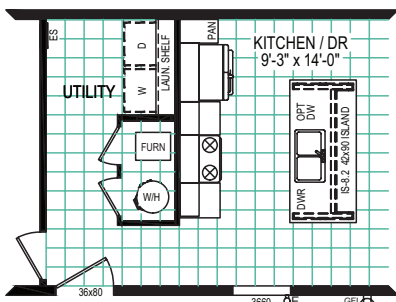
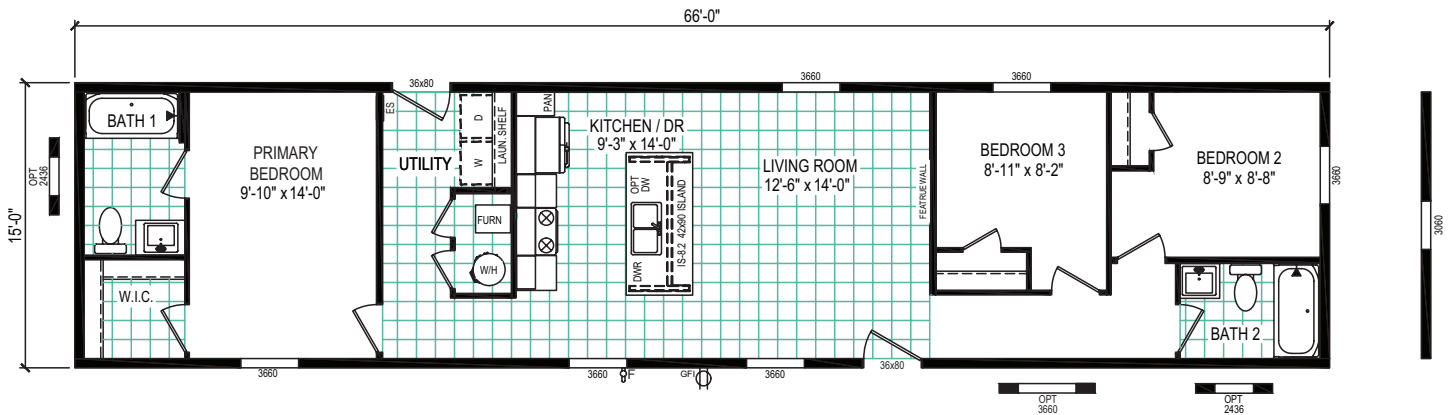


Single section

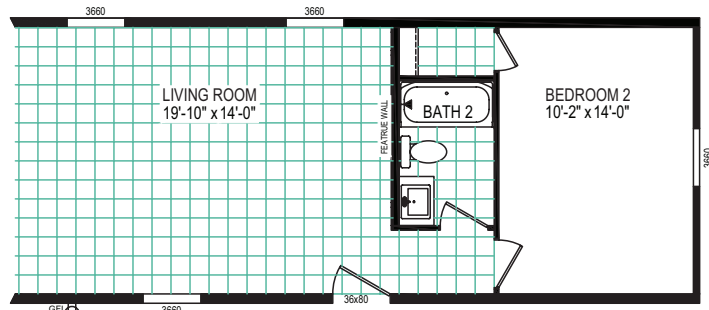
6616-4791

3 beds | 2 baths | 990 sq. ft. | 16x66

eBuilt



REVERSE AISLE OPTION



2-BEDROOM OPTION

PULSE COLLECTION

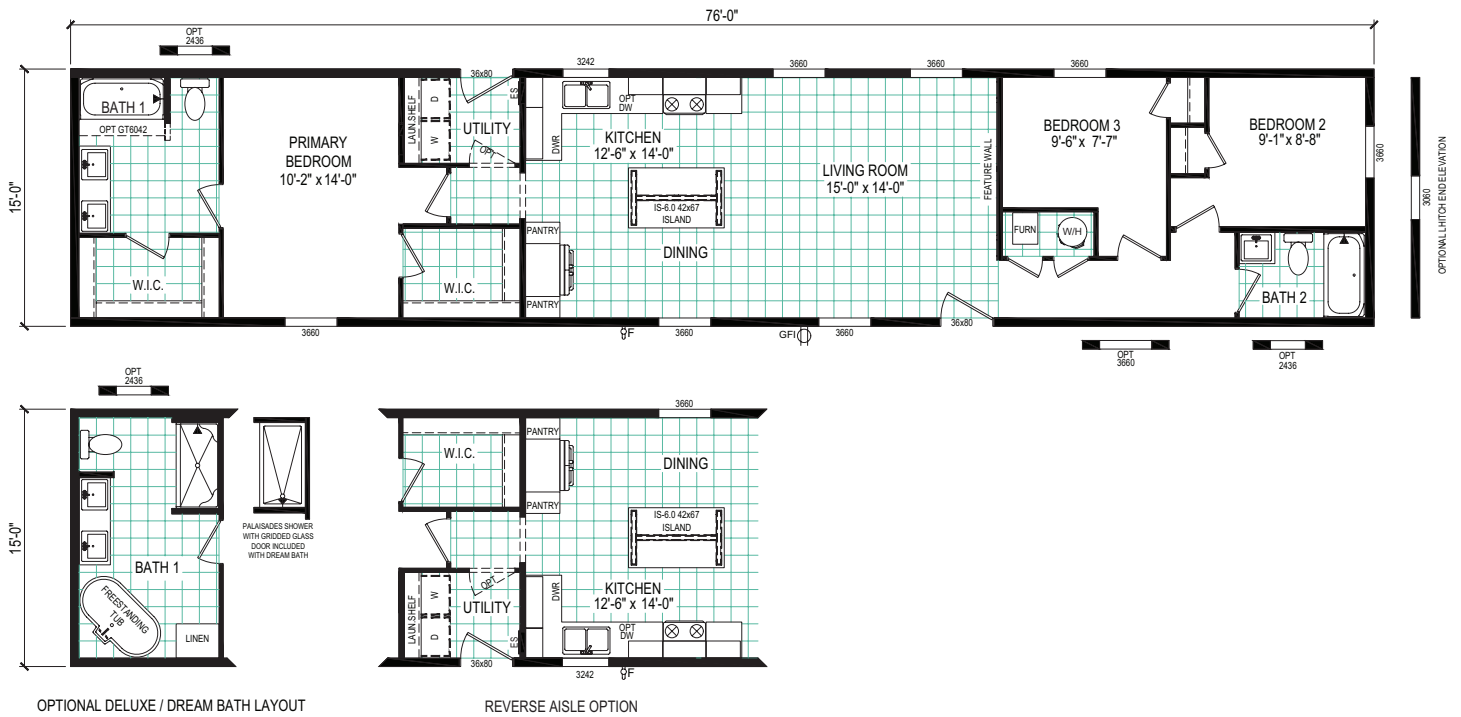


Single section

7616-4710

3 beds | 2 baths | 1,140 sq. ft. | 16x76

eBuilt



PULSE COLLECTION

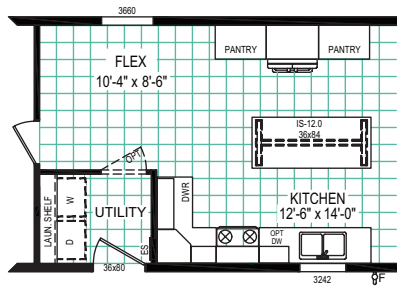
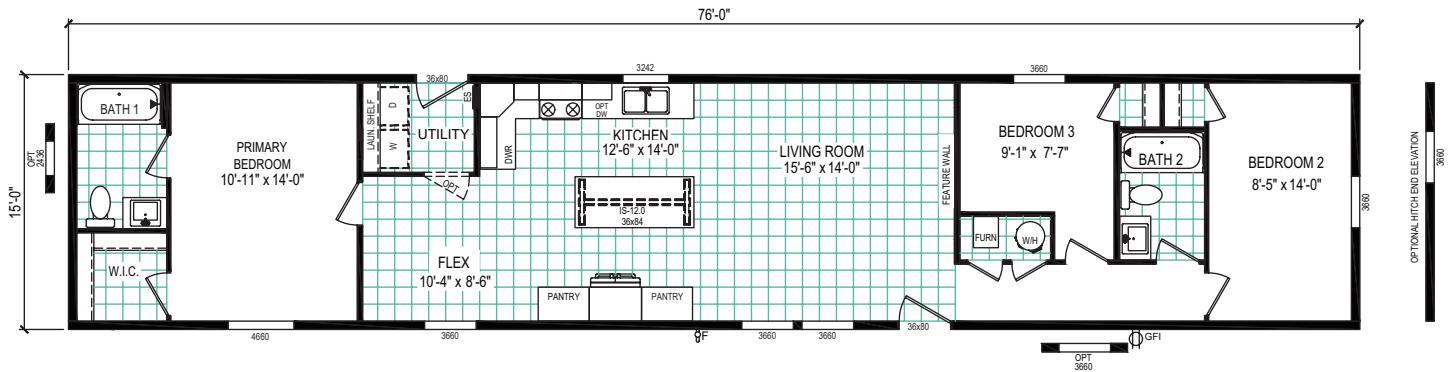


Single section

7616-4714

3 beds | 2 baths | 1,140 sq. ft. | 16x76

eBuilt



REVERSE AISLE OPTION

PULSE COLLECTION

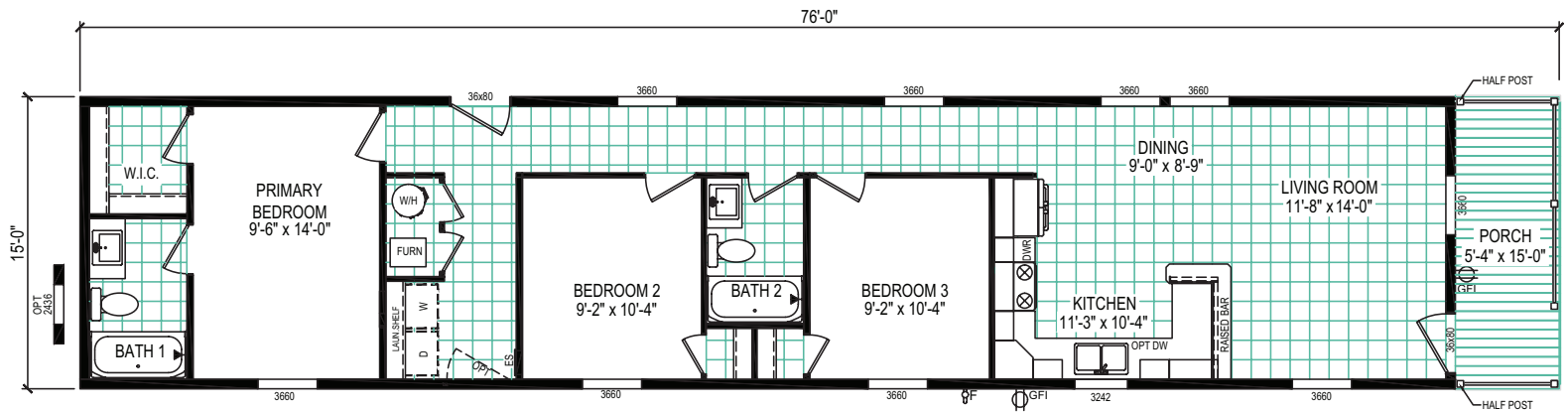


Single section

7616-4773P

3 beds | 2 baths | 1,060 sq. ft. | 16x76

eBuilt



PULSE COLLECTION

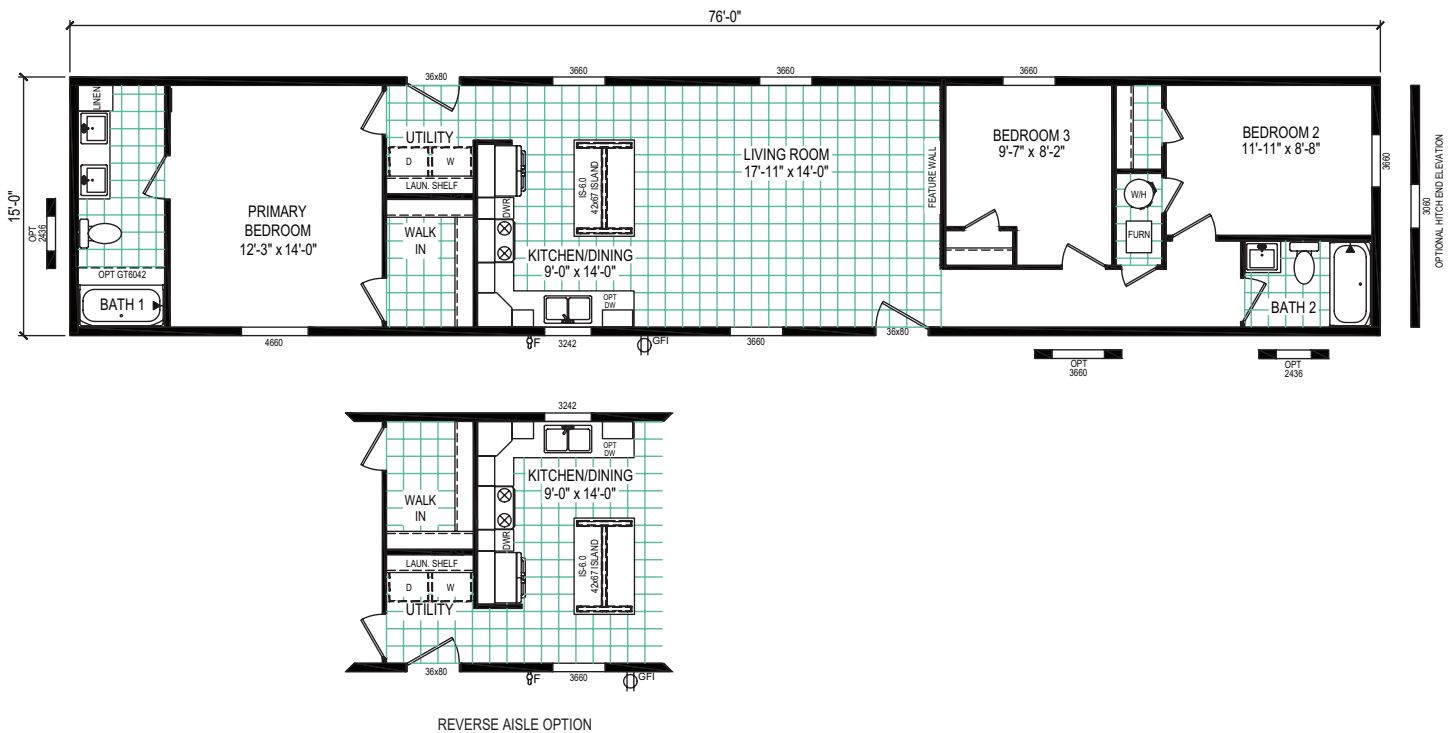


Single section

7616-4779

3 beds | 2 baths | 1,140 sq. ft. | 16x76

eBuilt



PULSE COLLECTION

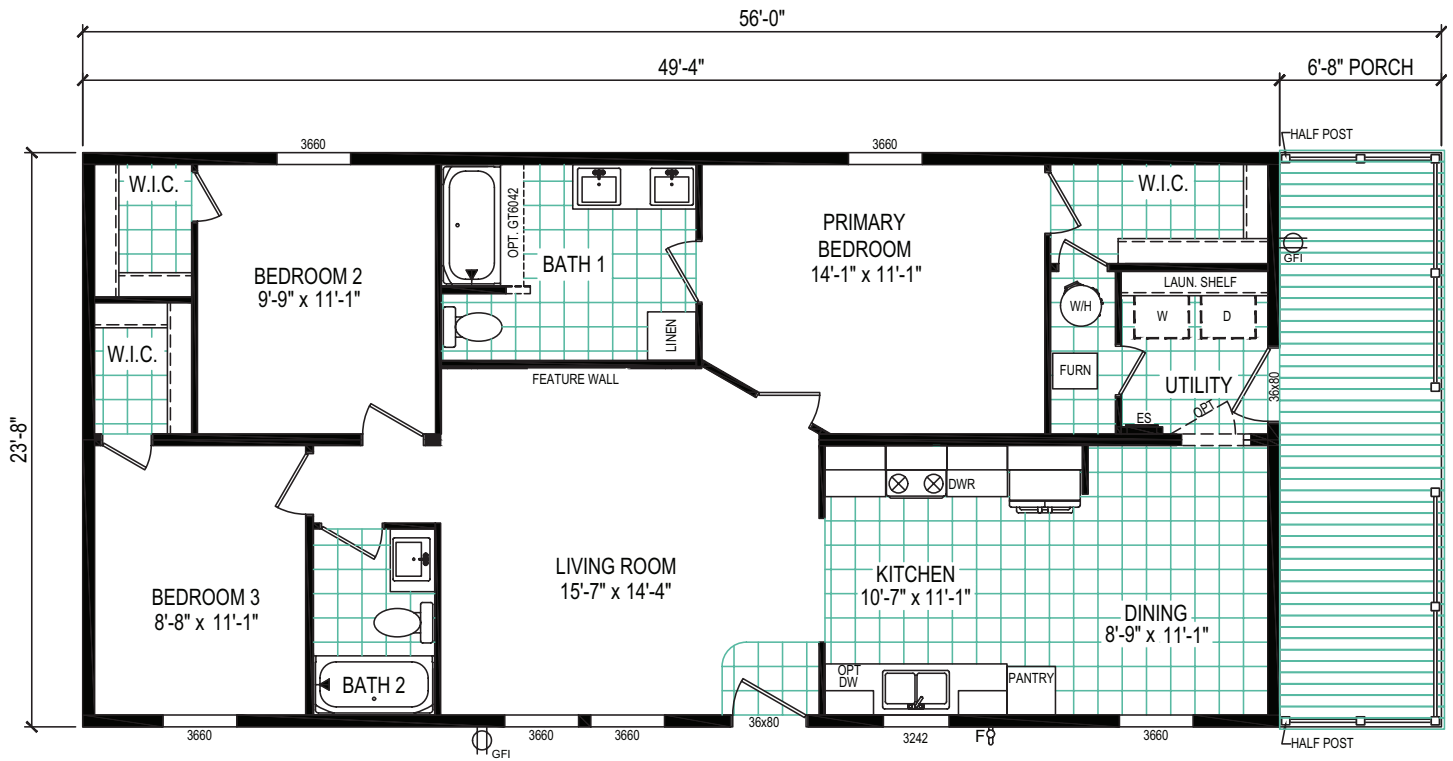


Multi-section

5624-5734P

3 beds | 2 baths | 1,168 sq. ft. | 24x56

eBuilt



PULSE COLLECTION

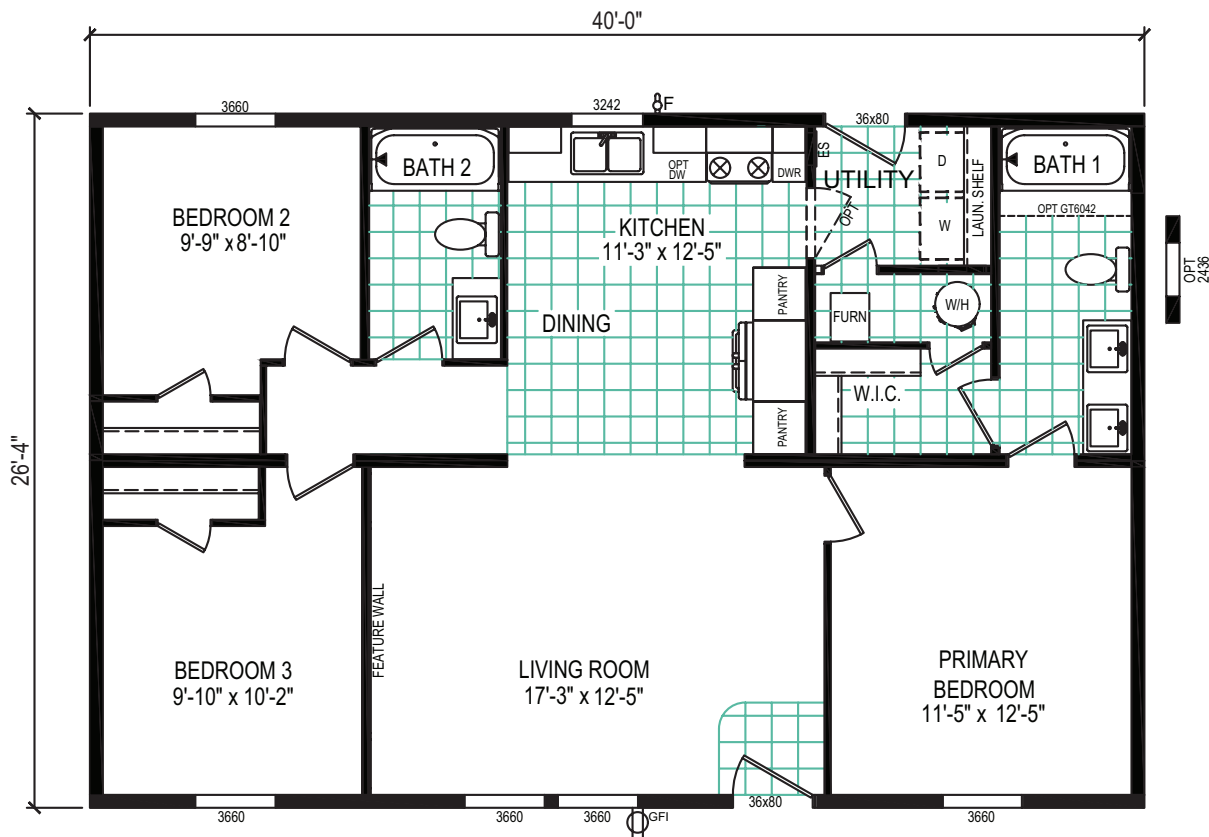


Multi-section

4028-5751

3 beds | 2 baths | 1,053 sq. ft. | 28x40

eBuilt



PULSE COLLECTION

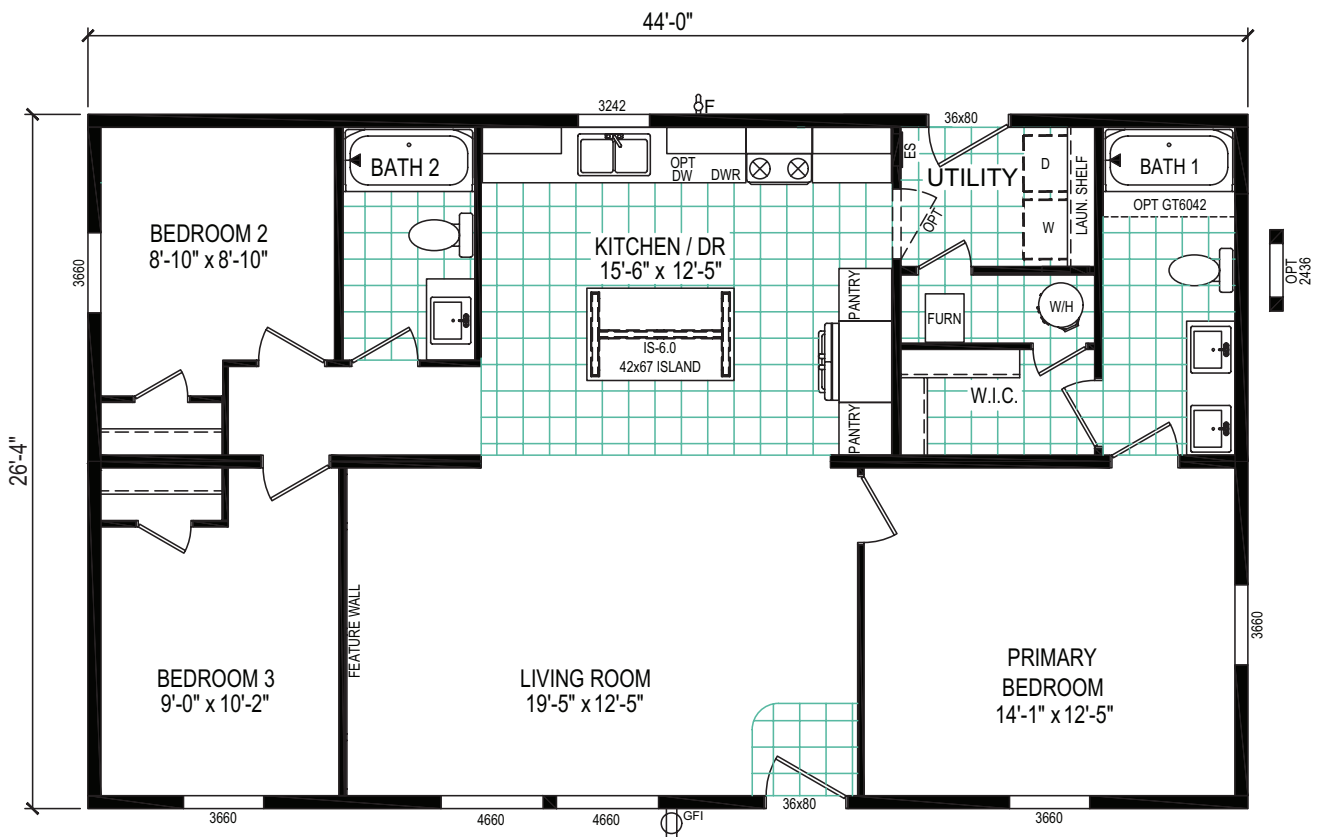


Multi-section

4428-5781

3 beds | 2 baths | 1,159 sq. ft. | 28x44

eBuilt



PULSE COLLECTION

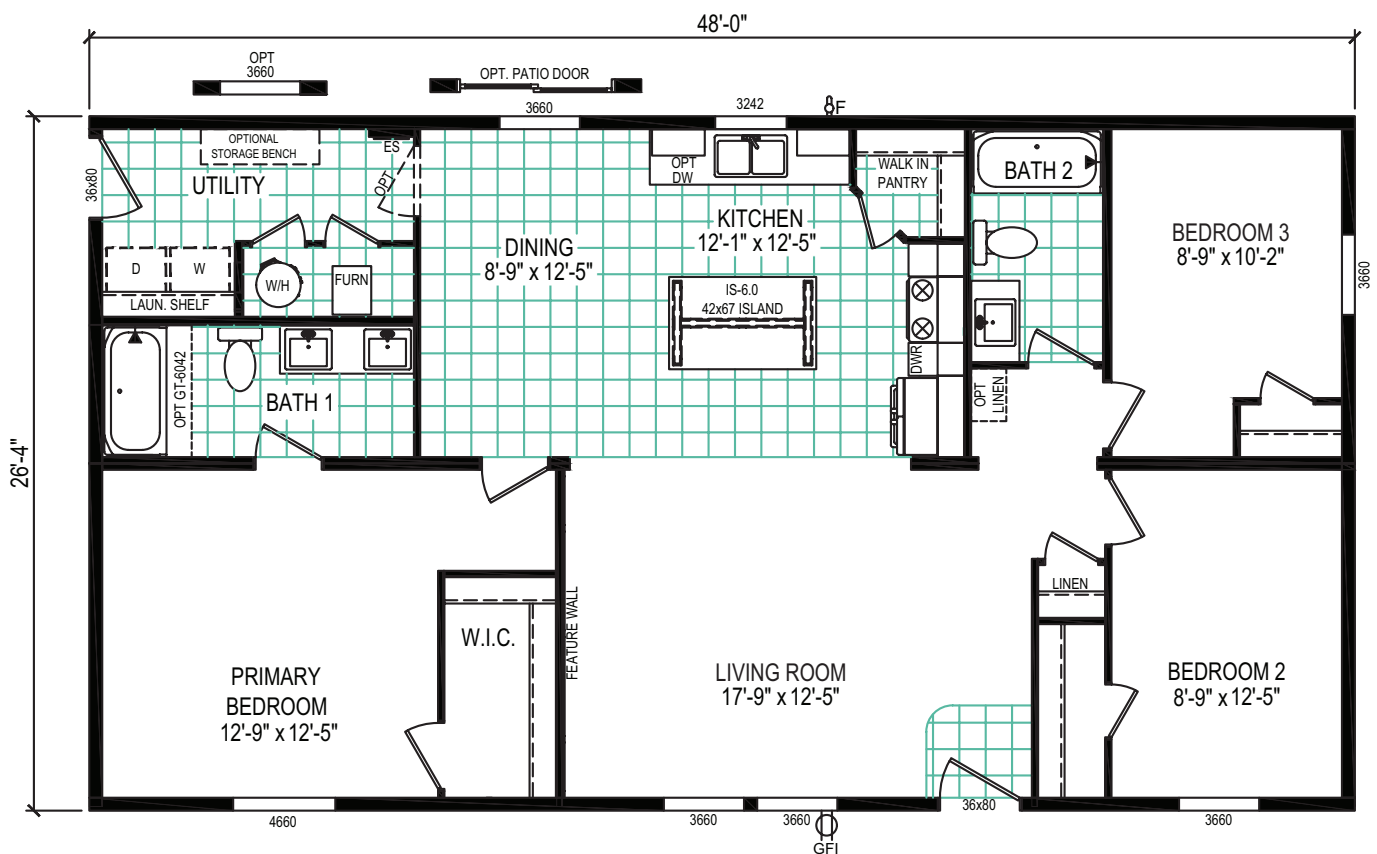


Multi-section

4828-5746

3 beds | 2 baths | 1,264 sq. ft. | 28x48

eBuilt



PULSE COLLECTION



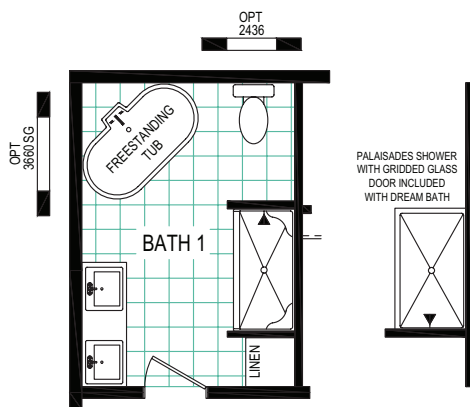
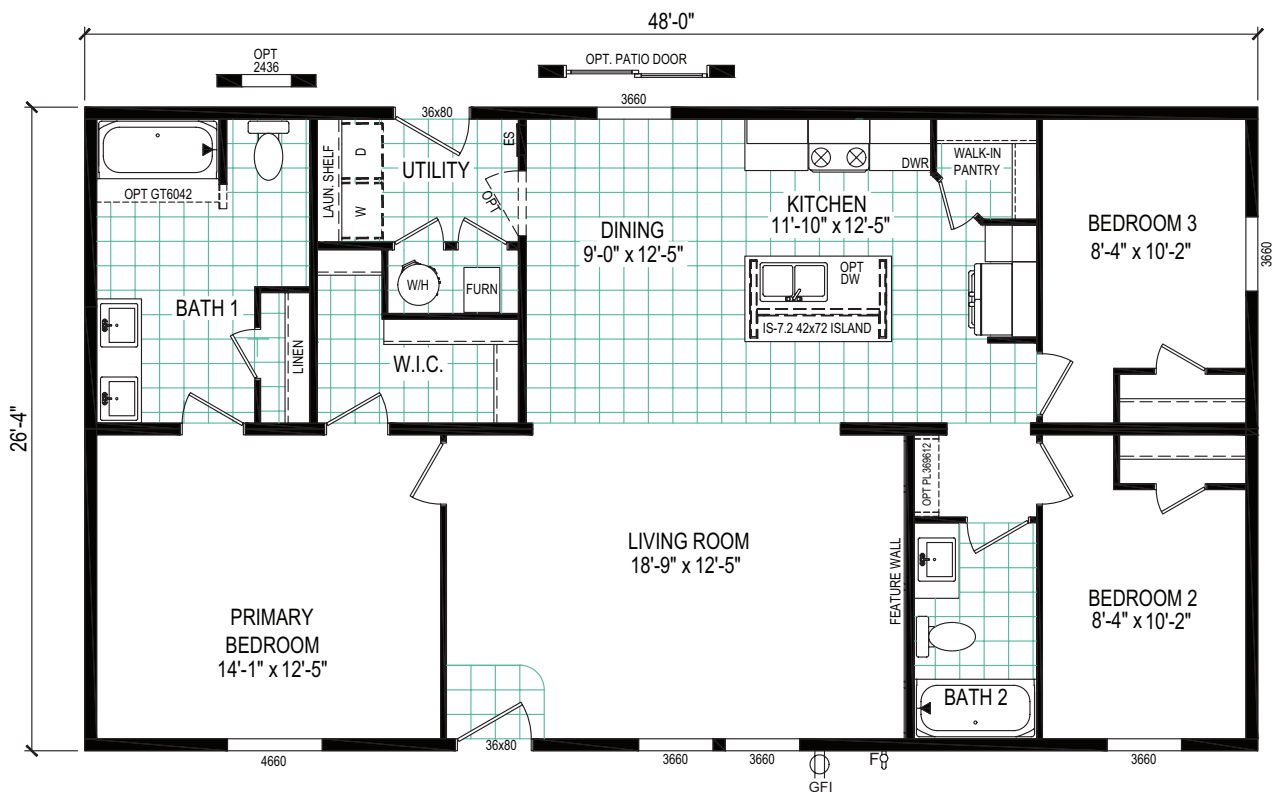
Multi-section

*Shown w/ optional Americana exterior package

4828-5783

3 beds | 2 baths | 1,264 sq. ft. | 28x48

eBuilt



OPTIONAL DELUXE / DREAM BATH LAYOUT

PULSE COLLECTION

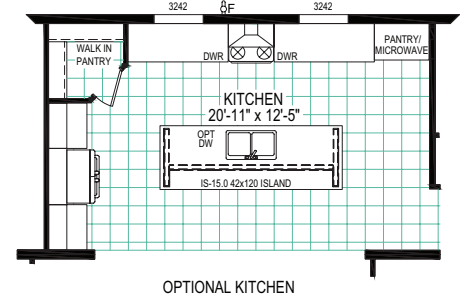
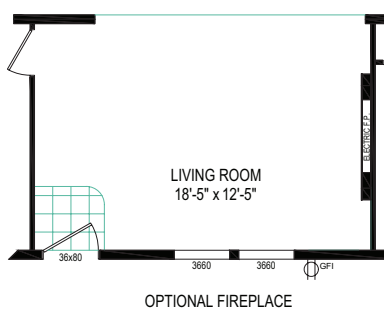
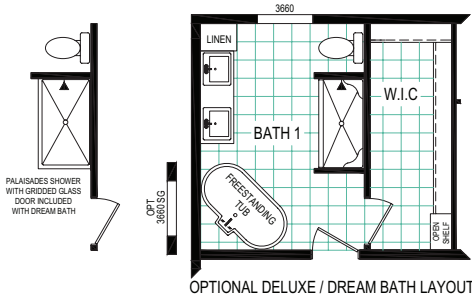
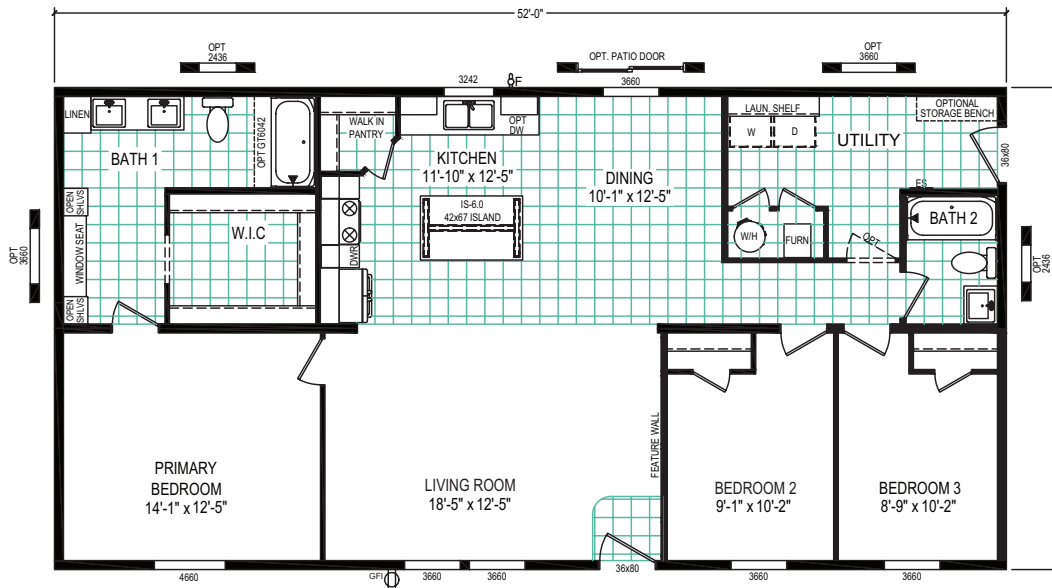


Multi-section

5228-5785

3 beds | 2 baths | 1,456 sq. ft. | 28x52

eBuilt



PULSE COLLECTION

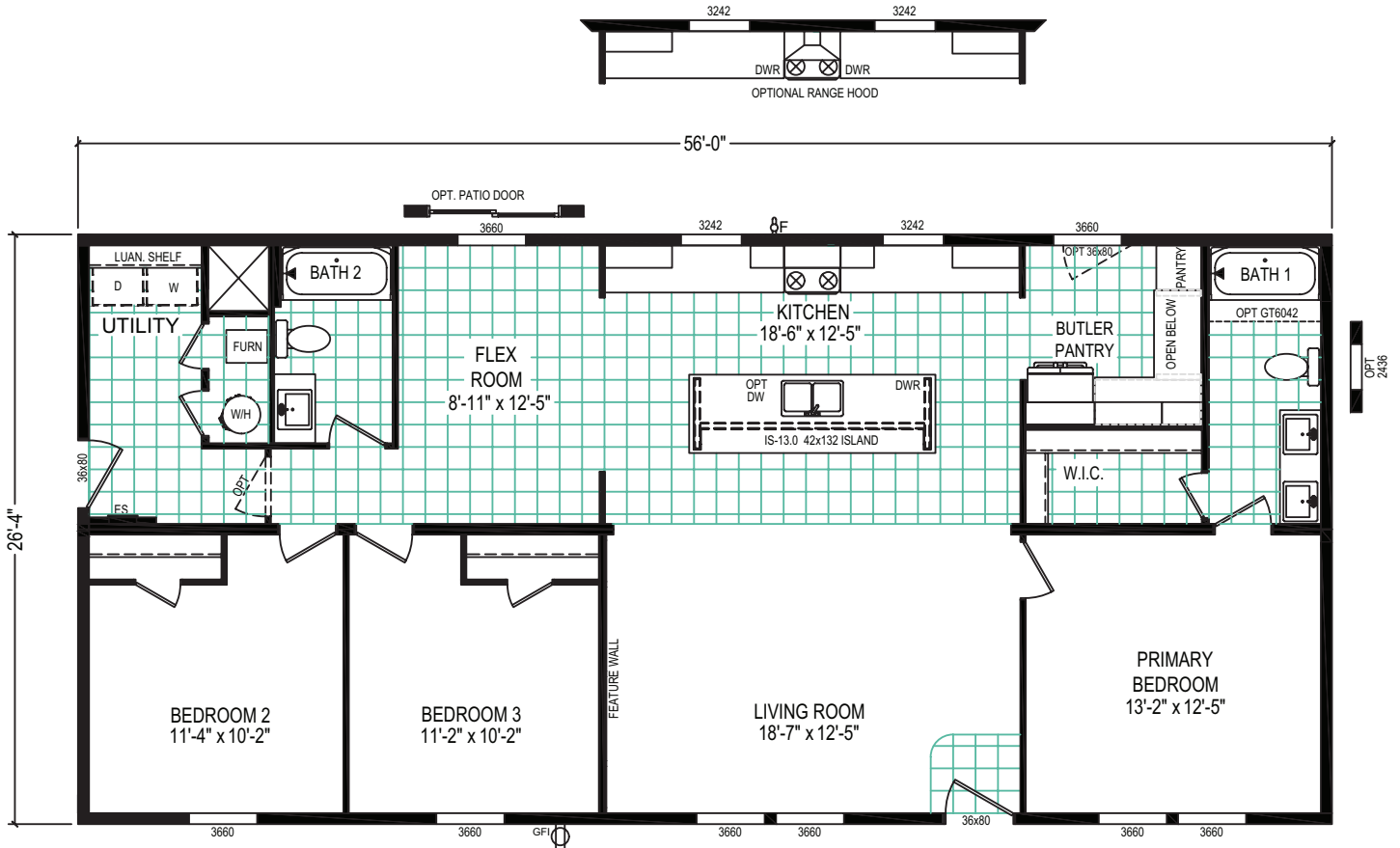


Multi-section

5628-5786

3 beds | 2 baths | 1,475 sq. ft. | 28x56

eBuilt



PULSE COLLECTION

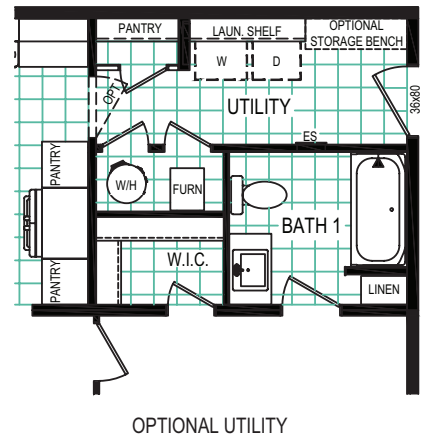
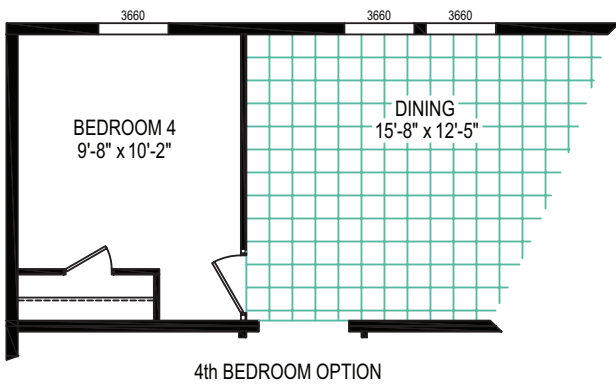
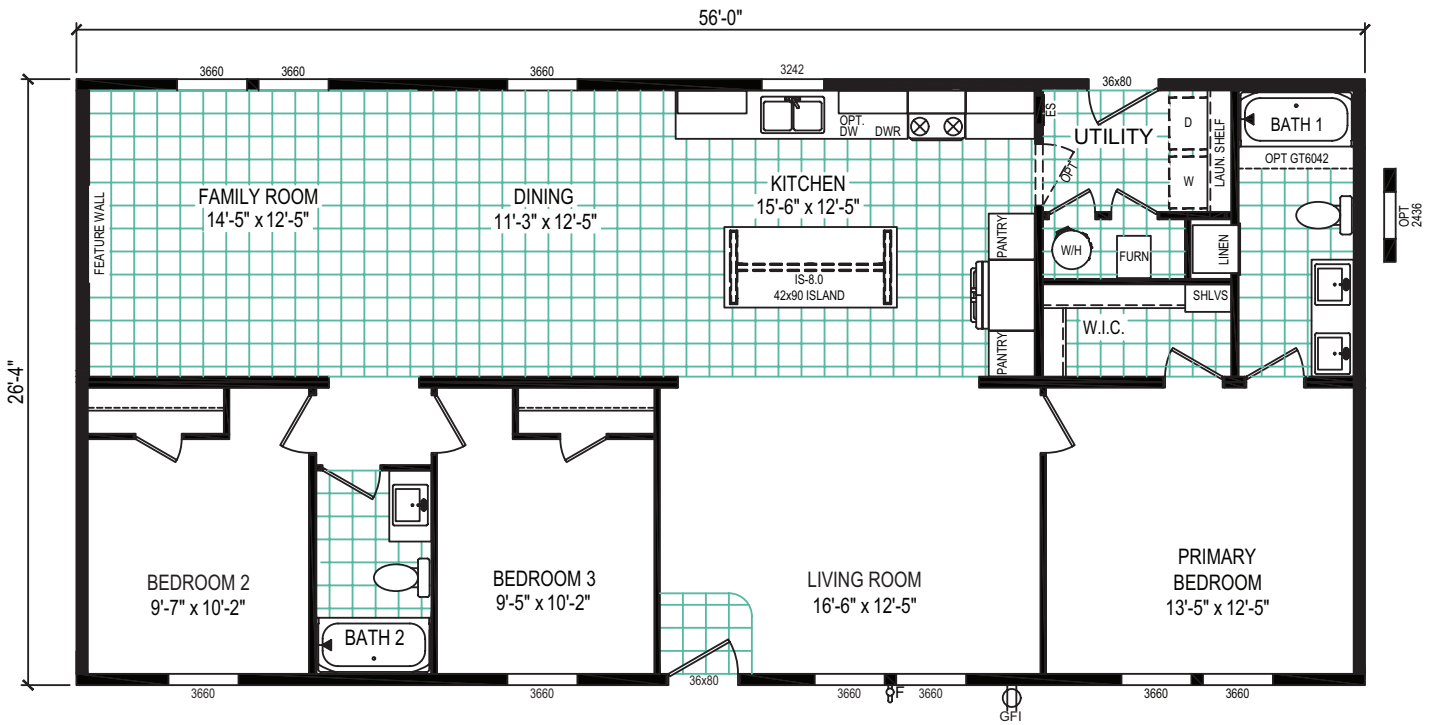


Multi-section

5628-5787

3 beds | 2 baths | 1,475 sq. ft. | 28x56

eBuilt



PULSE COLLECTION

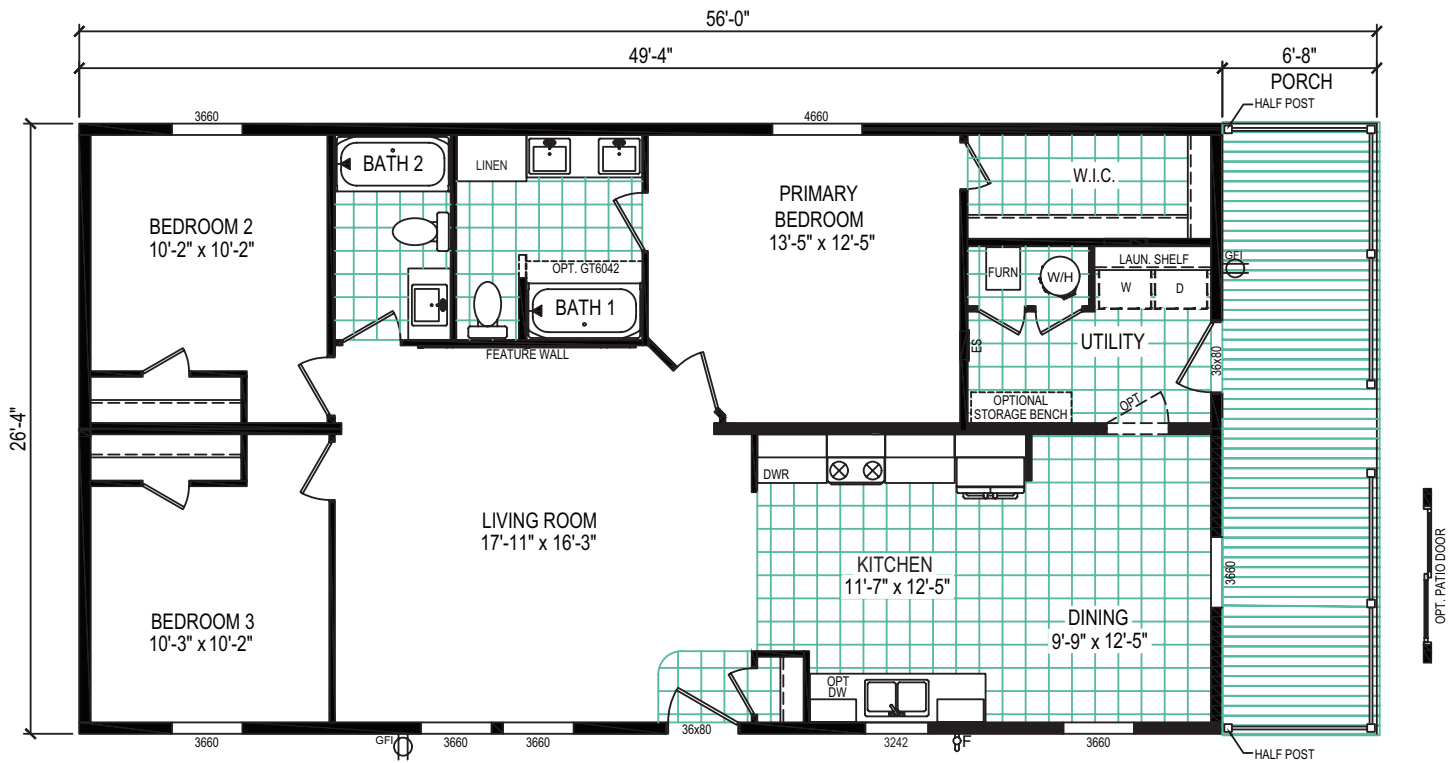


Multi-section

5628-5745P

3 beds | 2 baths | 1,299 sq. ft. | 28x56

eBuilt



PULSE COLLECTION

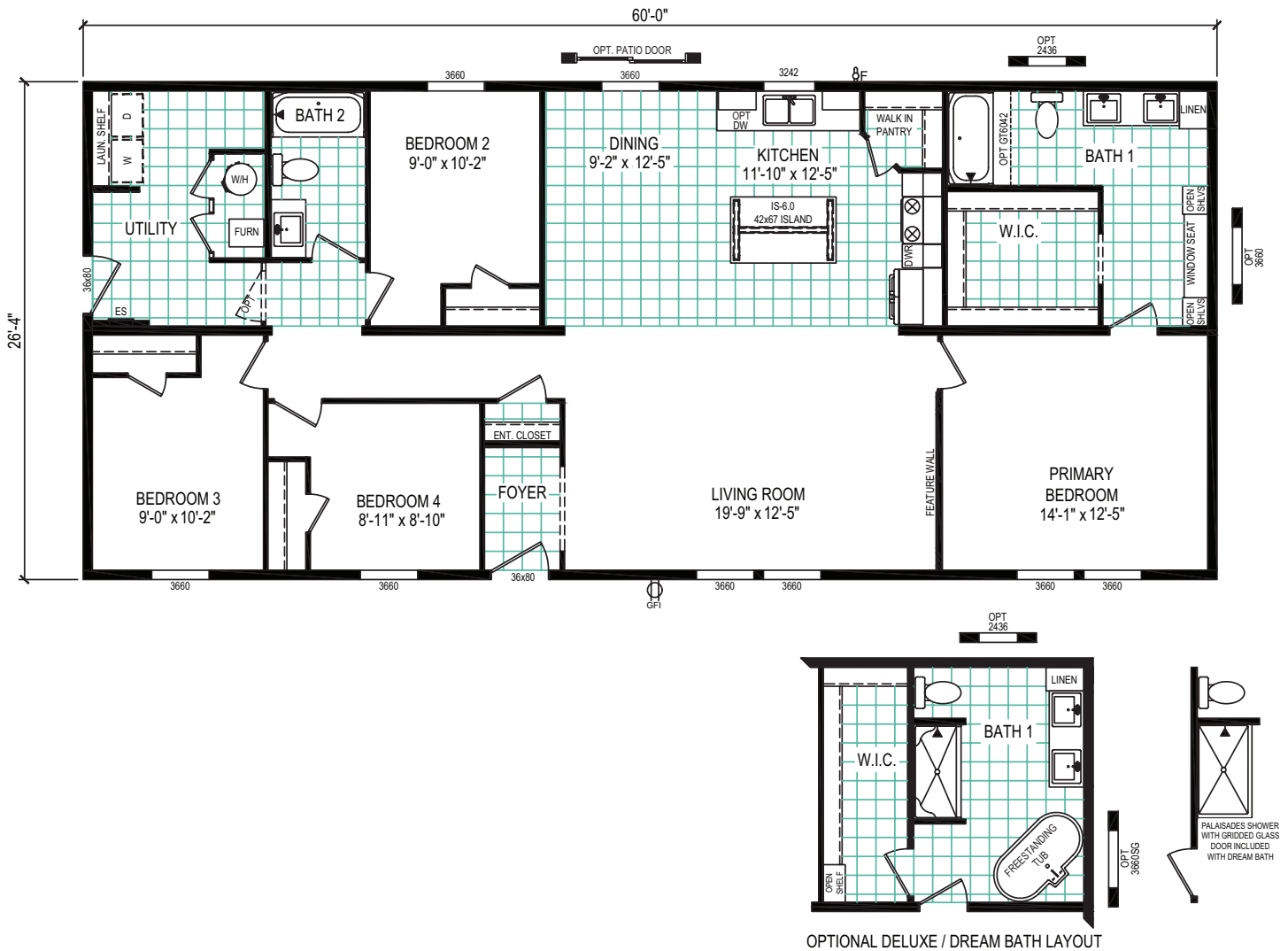


Multi-section

6028-5788

4 beds | 2 baths | 1,580 sq. ft. | 28x60

eBuilt



PULSE COLLECTION

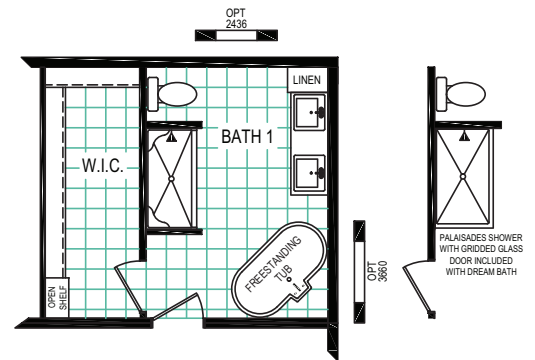
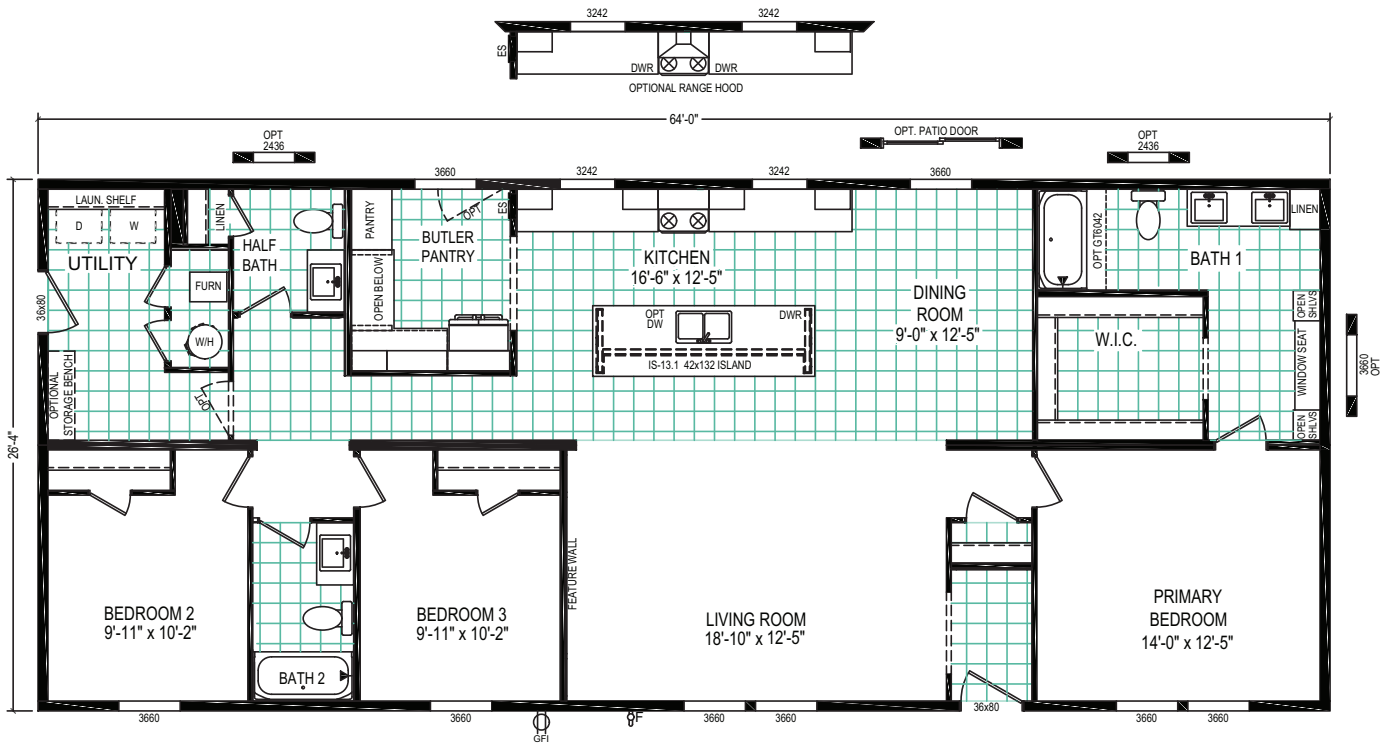


Multi-section

6428-5792

3 beds | 2.5 baths | 1,685 sq. ft. | 28x64

eBuilt



OPTIONAL DELUXE / DREAM BATH LAYOUT

PULSE COLLECTION

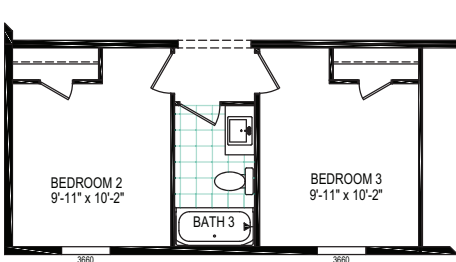
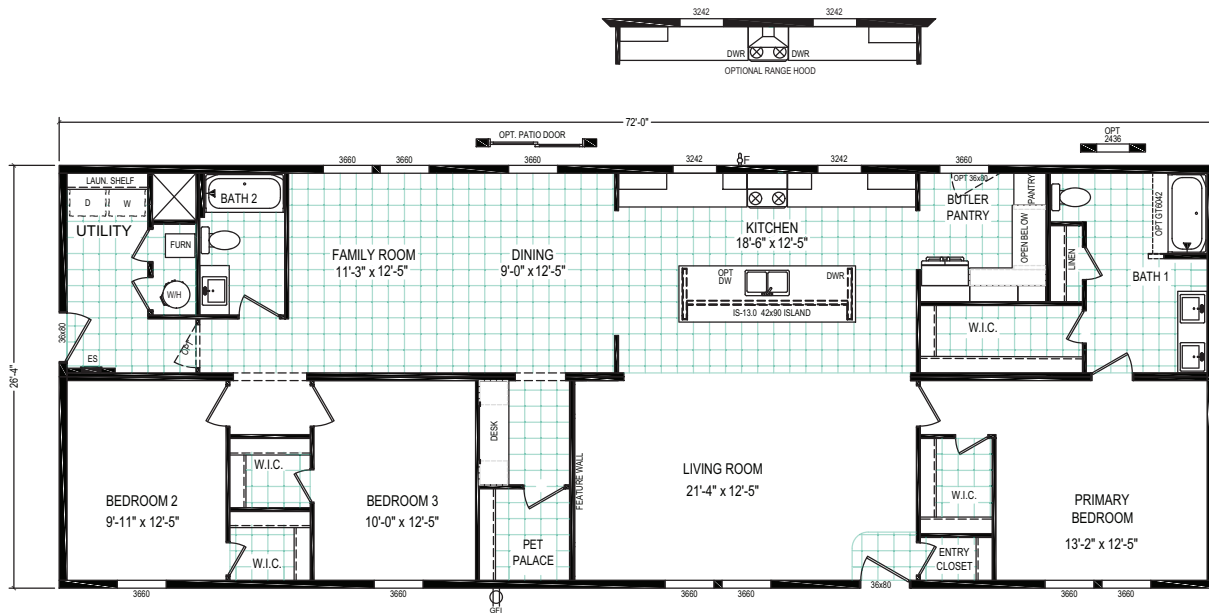


Multi-section

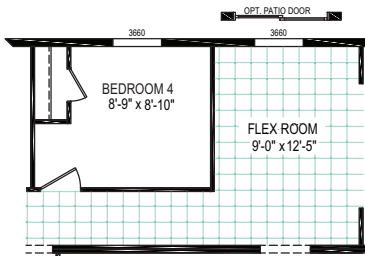
7228-5789

3 beds | 2 baths | 1,896 sq. ft. | 28x72

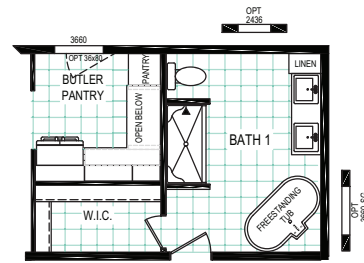
eBuilt



3rd BATH OPTION



4th BEDROOM OPTION



OPTIONAL DELUXE / DREAM BATH LAYOUT



PULSE COLLECTION

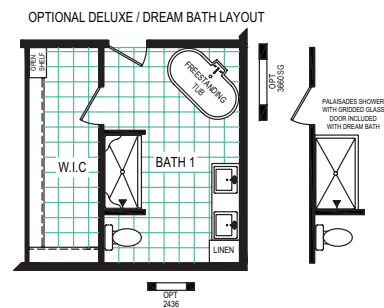
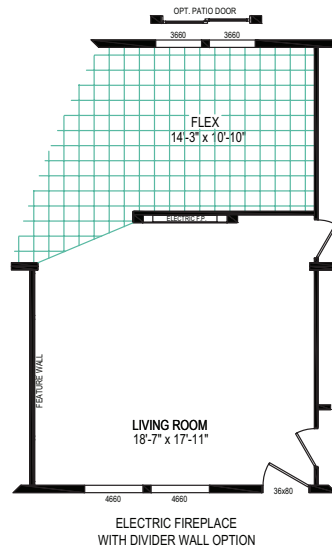
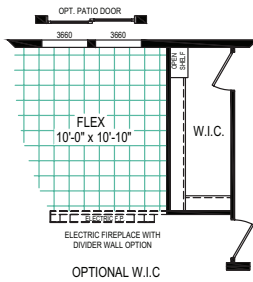
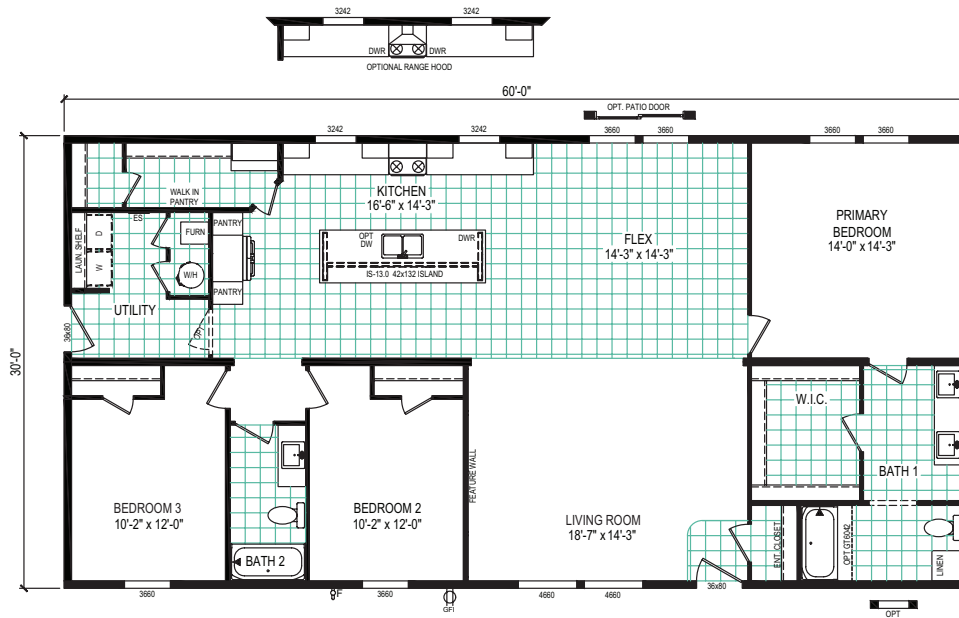


Multi-section

6032-5700

3 beds | 2 baths | 1,800 sq. ft. | 32x60

eBuilt



Optional hitch end elevations

Single section



Package A



Package B



Package C



Package D



Package E

Size of hitch end window will be determined by floor plan layout.

Note: Exterior light fixtures pictured on Hitch End Elevations are optional.

*Optional shutters shown in place of standard window lineals.

Optional hitch end elevations

Sectionals



Elevation A



Elevation B

Hitch end elevations are available where applicable per floor plan.

Note: Shutters pictured on hitch end are optional.

**Optional shutters shown in place of standard window lineals.*

Optional dormers



6' dormer (Only available on single section floor plans)
Shown with optional hitch end exterior "E"



10' dormer (Only available on 24', 28' and 32' floor plans)



20' dormer (Only available on 28' and 32' floor plans; not available on 24' floor plans)

*Note: Available where applicable per floor plan
Optional shutters shown in place of standard window lineals.

Optional door side elevations

Sectionals



Americana exterior elevation

*Includes: 20' open dormer, white columns,
Vertical board & batten surrounding front door and windows.
(Not available on 24' floor plans)



Americana exterior elevation

*Shown with optional board & batten upper siding (2-Tone)

Optional door side elevations

Sectionals



Frontier exterior elevation

**Includes: 20' dormer with 6' eyebrow dormer, white columns, vertical board & batten between columns and eyebrow dormer. (Not available on 24' floor plans)*

Door side elevations are available where applicable per floor plan.



Frontier exterior elevation

**Shown with optional board & batten upper siding (2-tone)*



PULSE COLLECTION

Clayton
wakarusa

66700 S.R. 19
Wakarusa, IN 46573

Phone: 574.862.4461 | Fax: 574.862.4559
www.claytonwakarusa.com

The home series, floor plans, photos, renderings, specifications, features, pricing, materials and availability shown will vary by retailer and state, and are subject to change without notice. Construction and design specifications as well as features presented conceptual, therefore should not be used as actual construction data and may not be offered in all series or models.